

# MBS & TREASURY MARKETS

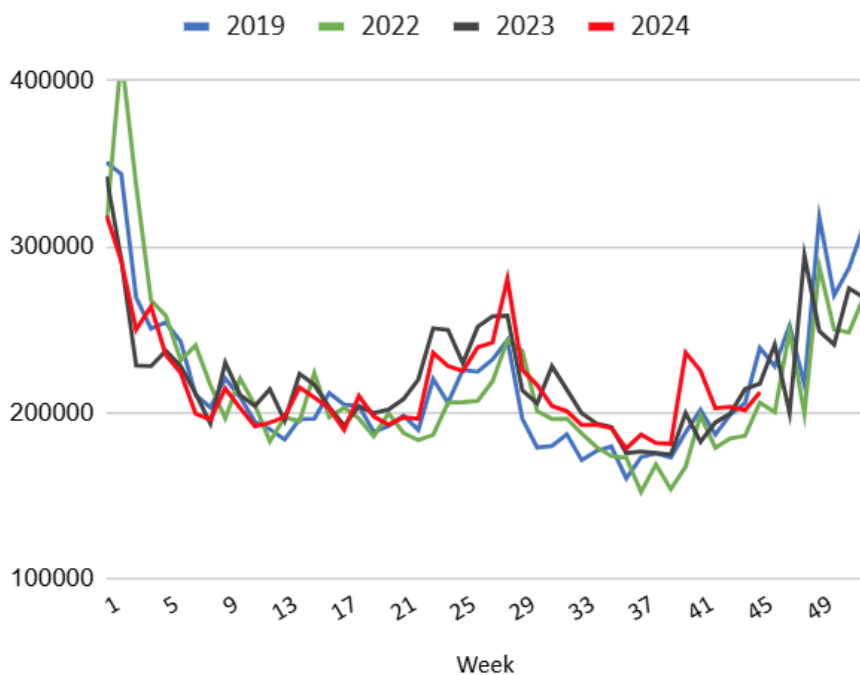
Daily Coverage. Industry Leading Perspective.

## UPDATE: Bonds Improving After Jobless Claims Data

- Jobless Claims
  - 221k vs 221k f'cast, 218k prev
- Continued Claims
  - 1892k vs 1880k f'cast, 1853k prev

Bonds were remarkably calm overnight, given the volatility that's dominated the average overnight session recently. Bonds were modestly stronger ahead of the jobless claims data and although the rally wasn't immediate, we've improved a bit since then. MBS are up just over a quarter point and 10yr yields are down 3.7bps at 4.394.

Jobless Claims, Week by Week, Not Seasonally Adjusted



**Brad Roche**

The Mortgage Planner,  
Element Home Loans

[www.TheMortgagePlanner.com](http://www.TheMortgagePlanner.com)

P: (704) 728-0191

M: (704) 929-7718

400 North Harbor Place  
Davidson NC 28036  
135191

THE  
**MORTGAGE**  
PLANNER

