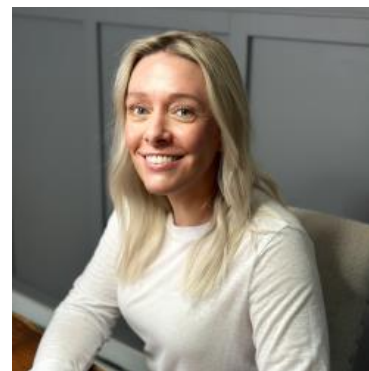


MBS & TREASURY MARKETS

Daily Coverage. Industry Leading Perspective.

ALERT: MBS Down an Eighth From AM Levels

MBS are now down an eighth of a point from AM rate sheet print times. As such, the jumpiest lenders could technically justify a negative reprice, but bonds are generally holding in a more sideways pattern. 10yr yields are up 4.4bps at 4.198.



Shannon McAlister

Luminate Home Loans

<https://home-owners-pdx.com/>

M: (503) 516-8881

shannon.mcalister@goluminate.com

NMLS885982

Member
FDIC

