

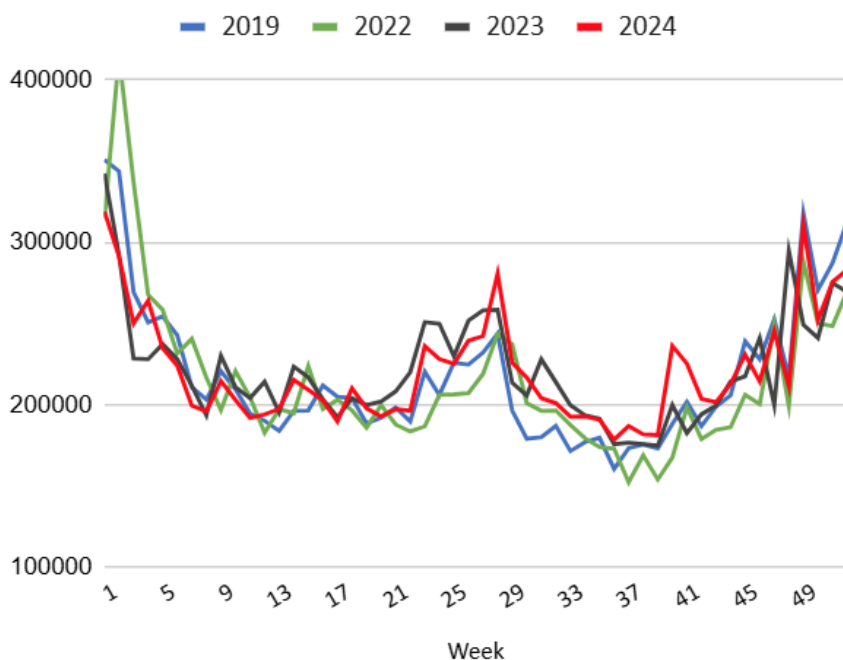
MBS & TREASURY MARKETS

Daily Coverage. Industry Leading Perspective.

The Day Ahead: Stronger Start Despite Some Selling After Data

Bonds were steadily stronger overnight, both in Asia and Europe. 10yr yields and MBS had both fully erased Tuesday's losses within the first 30 minutes of domestic trading. That's when Jobless Claims data came out. It was only slightly stronger than expected, but that was enough to cause a bounce back toward slightly milder gains. S&P Global Manufacturing PMI didn't add any drama to the mix. All in all, a quiet start to the new year.

Jobless Claims, Week by Week, Not Seasonally Adjusted



Todd Hanley, RICP®, CMA™

Senior Loan Officer, United Direct Lending

<https://todd.mortgage>

M: (954) 806-5114

todd.hanley@uniteddirectlending.com

5500 NW Glades Rd
Boca Raton FL 33431-7367
LO71086

