

MBS & TREASURY MARKETS

Daily Coverage. Industry Leading Perspective.

MBS Recap: Bonds Rally Back to Prevailing Range



Bryan Ashby

Owner, Ashby Financial Group, LC

www.ashbyfinancialgroup.com

P: (801) 294-6179

M: (801) 455-1007

bryan@ashbyfinancialgroup.com

326 Apricot Grove
Kaysville UT 84037

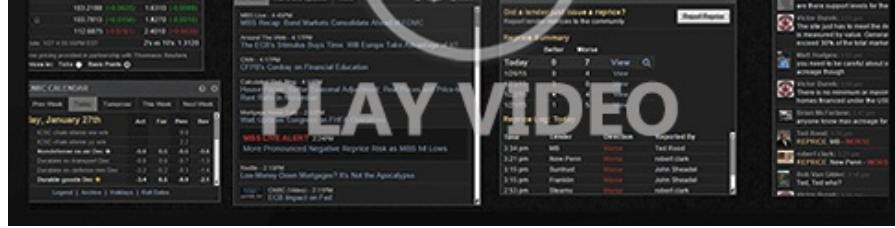


Bonds Rally Back to Prevailing Range

MBS Recap | Matthew Graham | 4:38 PM

The only moderately inconvenient part of the day was the morning hours as bonds lost ground overnight and started out weaker in domestic trading. That didn't last long. Yields began falling just after 9am and continued lower after today's biggest economic report came out weaker than expected (job openings at 7.6m vs 8.0m f'cast). Oil prices took a temporary hit from newswires regarding Trumping increasing pressure on Iran, but as that price spike leveled off, bonds continued to improve. Some news outlets suggest today's gains had something to do with the Mexico/Canada tariff pause, but that news was out well before the AM weakness. The simplest view is that bonds opted to maintain the prevailing range which has seen 10yr yields hold within 6bps of 4.53 since January 24th.





Watch the Video

MBS Morning

10:32 AM Recovering Overnight Losses With Help From JOLTS and in Spite of Oil Price Bounce

Econ Data / Events

- ○ Job Openings (lower is better for rates)
 - 7.6m vs 8.0m f'cast
- Job Quits (lower is better for rates)
 - 3.197m vs 3.064m f'cast

Market Movement Recap

- 10:32 AM Weaker overnight, but back near unchanged after JOLTS data. MBS up 1 tick (.03) and 10yr down .4bps at 4.555
- 12:31 PM best levels of the day. MBS up an eighth and 10yr down almost 4bps at 4.521
- 03:11 PM some more gains with mbs up 6 ticks (.19) and 10yr down 4.4bps at 4.516

Lock / Float Considerations

- Despite over-the-weekend tariff news, bonds are broadly maintaining plenty of composure. Risk takers continue having some room overhead to set lock triggers. Risk averse clients can keep calm and lock on, until we see a clear data-driven shift in momentum in favor of lower rates. On that note, data represents elevated risks every day of the week, and especially on Thursday night heading into the jobs report.

Technical/Trends in 10yr (why 10yr)

- Ceiling/Support (can be used as "lock triggers")

- 4.88
- 4.80
- 4.74
- 4.67

- Floor/Resistance

- 4.43
- 4.50
- 4.57

MBS & Treasury Markets



MBS

| | |
|------------------|---|
| 30YR UMBS 5.5 | + |
| 30YR UMBS 6.0 | + |
| 30YR GNMA 5.5 | |
| 15YR UMBS-15 5.0 | + |

US Treasuries

| | | |
|-------|--------|---------|
| 10 YR | 4.514% | -0.045% |
| 2 YR | 4.215% | -0.042% |
| 30 YR | 4.749% | -0.046% |
| 5 YR | 4.320% | -0.046% |

[Open Dashboard](#)

[Share This](#)