

MBS & TREASURY MARKETS

Daily Coverage. Industry Leading Perspective.

MBS Recap: Another Paradoxical Reaction to an Inflation Report



Matthew M. Loan

Senior Loan Officer,
Mortgage Company, LLC.

mbslive.net

P: (704) 867-5309

M: (980) 867-5309

1050 W. Main St.
Charlotte NC 28031

NMLS: #987654321



Christina "Demo" Realtor

Managing Partner, Real
Estate Company, LLC.

mbslive.net

P: (704) 555-1212

M: (980) 555-1212

social+test@mbslive.net

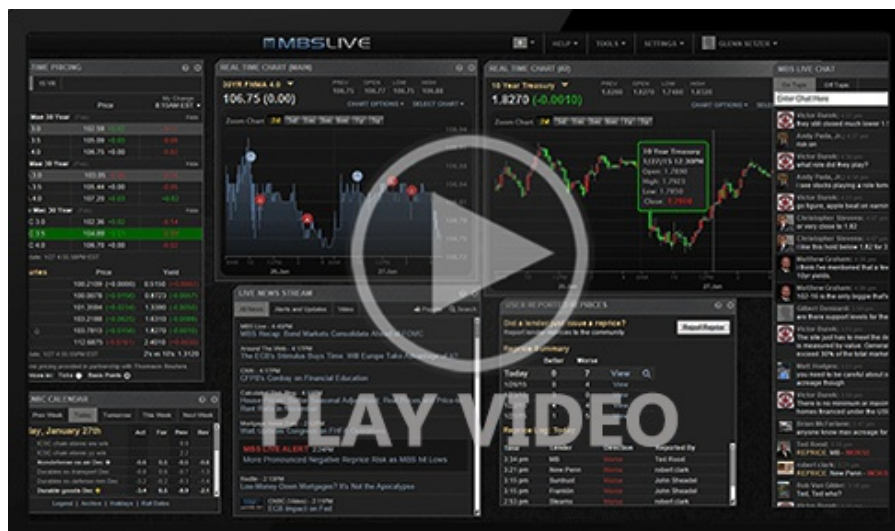
12954 S. Broad St.
Charlotte NC 28031



Another Paradoxical Reaction to an Inflation Report

MBS Recap | Matthew Graham | 4:07 PM

For the 2nd month in a row, the market's reaction to a CPI/PPI report ended up being less about the report itself and more about its implications for the more highly regarded PCE inflation data. While we have to wait 2 weeks for official word on PCE, the CPI/PPI combination goes a long way toward revealing the outcome. In today's case, CPI suggested higher PCE inflation, so bonds ended up selling off, albeit modestly, despite core CPI coming in lower than expected. Thursday's PPI once again has the opportunity to punch above its typical weight for the same reason.



[Watch the Video](#)

Update

8:41 AM Mixed Reaction After CPI Comes in Lower

MBS Morning

11:48 AM Why Aren't Bonds Happier About CPI?

Econ Data / Events

- ○ Core M/M CPI
 - 0.2 vs 0.3 f'cast. 0.5 prev
 - unrounded 0.2266
- Core Y/Y CPI
 - 3.1 vs 3.2 f'cast, 3.3 prev

Market Movement Recap

- 09:31 AM Weaker overnight and mixed reaction to CPI (mostly ignored). MBS down 1 tick (0.03) and 10yr up 3.6bps at 4.316
- 12:46 PM MBS up 1 tick (.03) and 10yr up 2.8bps at 4.308
- 03:41 PM Fairly flat in the afternoon, despite some noise in both directions. MBS are unchanged and 10yr yields are up 3.6bps at 4.317

Lock / Float Considerations

- Through Wednesday, the bond market made it very clear that we're in consolidation mode after hitting resistance last week. So far, that's been mostly a sideways affair, but a breakout in either direction is possible. The real hope for a return to last week's lowest rates would be a favorable reaction to Thursday's PPI (or an even more massive stock market rout, perhaps). Failing that, or an equally compelling surprise, bonds aren't looking eager to challenge recent resistance.

Technicals/Trends in 10yr (why 10yr)

- Ceiling/Support (can be used as "lock triggers")
 - o 4.57
 - o 4.50
 - o 4.40
 - o 4.34
- Floor/Resistance
 - o 4.05
 - o 4.12
 - o 4.19

MBS & Treasury Markets





MBS

30YR UMBS 5.5	+
30YR UMBS 6.0	+
30YR GNMA 5.5	+
15YR UMBS-15 5.0	

US Treasuries

10 YR	4.316%	+0.036%
2 YR	3.990%	+0.047%
30 YR	4.635%	+0.037%
5 YR	4.074%	+0.043%

Open Dashboard

Share This