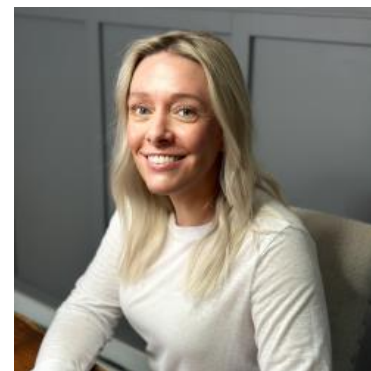


# MBS & TREASURY MARKETS

Daily Coverage. Industry Leading Perspective.

## The Day Ahead: Paradoxical Reaction to Slightly Higher Inflation

Inflation, via this morning's PCE price index, came in slightly hotter than expected, but bonds are rallying in response. There are a few ways to approach this paradox both in the long and short term. On a more nitty gritty level, the unrounded PCE numbers were fairly close to consensus and that can always help mitigate unfriendly data. In the bigger picture, we can consider a few other factors. On a data-related note, annual PCE (non-core) stayed at 2.5% vs 2.5%--not too terrible considering a 2.0% target. Data aside, we can also consider the gap that we've discussed several times this week and the fact that bonds could simply be rallying because it was finally filled yesterday.



**Shannon McAlister**

Luminate Home Loans

<https://home-owners-pdx.com/>

M: (503) 516-8881

[shannon.mcalister@goluminate.com](mailto:shannon.mcalister@goluminate.com)

NMLS885982

Member  
**FDIC**

