

MBS & TREASURY MARKETS

Daily Coverage. Industry Leading Perspective.

A message from Nickolas Inhelder:

We Make Home Happen.™

Our goal is simple:

To help every family we serve get to "Yes."

Yes to the loan that unlocks the joy of home ownership.

Yes to the lending solution that meets every client's unique needs and wants.

That's why we dedicate our every resource to serve as your personal guide through the lending process, solving problems, building confidence. Aslan has access to every lending option leading to the purchase or refinance of a residential home loan.

This is more than work for us. It is our unique joy in this life to share our collective skill, creativity, and care to bring you and your family right to where you belong.

Let's make home happen.

CONTACT ME TODAY



Nickolas Inhelder

Mortgage Broker, Aslan
Home Lending Corp

www.AslanHLC.com

P: (720) 446-8778

M: (858) 229-9533

nick@inhelderinvestments.com

1777 S. Harrison St.

Denver CO 80210

2037157 - CO, FL

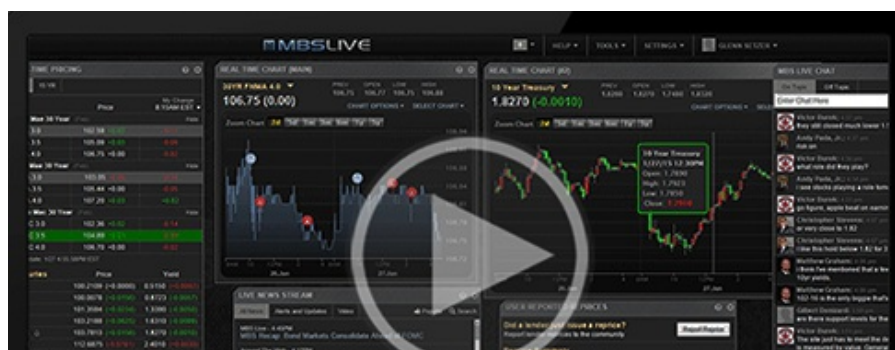


MBS Recap: What's Up With The Big Bond Rally Despite Higher Inflation?

What's Up With The Big Bond Rally Despite Higher Inflation?

MBS Recap | Matthew Graham | 5:14 PM

It was one thing when bonds were only modestly stronger after this morning's inflation data. But 10yr yields went on to drop 12.7bps to the day at the lowest levels of the week (4.235%) and MBS rallied nearly 3/8ths of a point. The magnitude of the additional improvement demands additional explanation. On a speculative note, it's a strong possibility that we're seeing month/quarter-end positioning play a role. On a more obvious note, stocks tanked and there's a strong tendency for friendly spillover to bonds when stocks sell this much.





Watch the Video

Update

8:42 AM Bonds Unfazed By Slightly Hotter PCE

MBS Morning

9:34 AM Paradoxical Reaction to Slightly Higher Inflation

Econ Data / Events

- ○ Core PCE M/M
 - 0.4 vs 0.3 f'cast, 0.3 prev
- Core PCE Y/Y
 - 2.8 vs 2.7 f'cast, 2.7 prev

Market Movement Recap

- 08:43 AM Stronger overnight and improving after PCE. MBS up 6 ticks (.19) and 10yr down nearly 6bps at 4.303.
- 01:30 PM Rally continues. Stocks swooning. MBS up 10 ticks (.31) and 10yr down 11bps at 4.253
- 03:27 PM Sideways and just off best levels. MBS up a quarter point and 10yr down 10.2bps at 4.259

Lock / Float Considerations

- Due to potential distortions from month/quarter-end trading, the momentum that we're seeing at the end of March shouldn't be taken as a sign of things to come in early April. If the resilience is to continue, it would require support from weaker economic data.

Technicals/Trends in 10yr (why 10yr)

- Ceiling/Support (can be used as "lock triggers")
 - o 4.57
 - o 4.50
 - o 4.40
 - o 4.34
- Floor/Resistance
 - o 4.05
 - o 4.12
 - o 4.19

MBS & Treasury Markets



MBS

30YR UMBS 5.5	+
30YR UMBS 6.0	+
30YR GNMA 5.5	+
15YR UMBS-15 5.0	+

US Treasuries

10 YR	4.242%	-0.120%
2 YR	3.902%	-0.092%
30 YR	4.624%	-0.101%
5 YR	3.982%	-0.109%

[Open Dashboard](#)

[Share This](#)