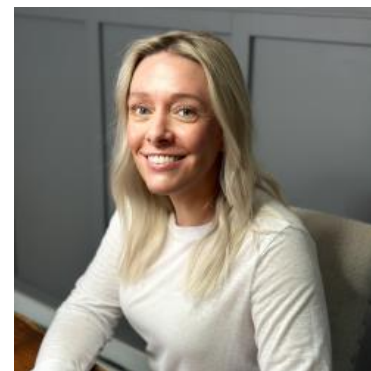


# MBS & TREASURY MARKETS

Daily Coverage. Industry Leading Perspective.

## The Day Ahead: Stronger Start as Tariffs Continue Driving Flight to Safety

Right out of the gate in the overnight session, stocks were weaker and bonds were stronger in a **risk-off** move that has become all too familiar for financial markets recently. Over the weekend, a fresh round of tariff headlines added more economic uncertainty to the mix with Trump mentioning reciprocal tariffs with "all countries" and WSJ reporting that an across-the-board 20% tariff is being considered. Stocks and bond yields are both rapidly re-approaching their lowest levels of this cycle.



**Shannon McAlister**

Luminate Home Loans

<https://home-owners-pdx.com/>

**M:** (503) 516-8881

[shannon.mcalister@goluminate.com](mailto:shannon.mcalister@goluminate.com)

NMLS885982

Member  
**FDIC**

