

MBS & TREASURY MARKETS

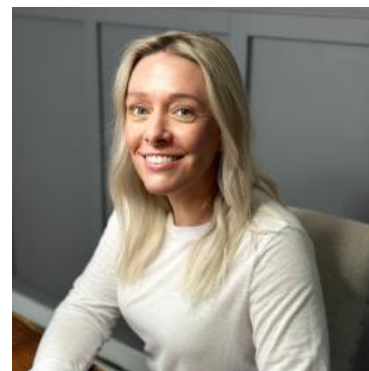
Daily Coverage. Industry Leading Perspective.

ALERT: Negative Reprices Becoming Increasingly Likely

MBS are now down 14 ticks (.44) on the day and from many lenders' rate sheet print times. If you haven't seen a negative reprice yet, the odds are getting very high.

10yr yields are up 5bps at their weakest levels of 4.402.

We'll discuss "why" in today's recap.



Shannon McAlister

Luminate Home Loans

<https://home-owners-pdx.com/>

M: (503) 516-8881

shannon.mcalister@goluminate.com

NMLS885982

Member
FDIC

