

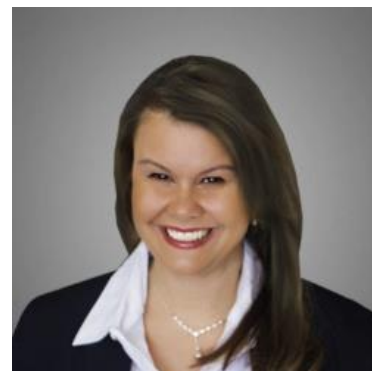
# MBS & TREASURY MARKETS

Daily Coverage. Industry Leading Perspective.

## **ALERT:** Negative Reprices Becoming Likely

MBS now down 6 ticks (.19) on the day and more than a quarter point from AM highs. Lenders who had rates available before 10am (or even shortly thereafter) are increasingly likely to reprice for the worse.

10yr yields are up 6.7 bps at 4.227.



**Deanna Adinolfo-Rivera**

Community Lending  
Powered by Lower, LLC.

NMLS# 1124061

M: (239) 878-0107

deanna@communitylendingfl.com

8191 College Pkwy Suite 203

Fort Myers, FL 33919

NMLS #327112

