

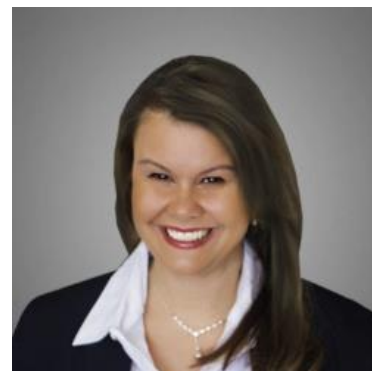
MBS & TREASURY MARKETS

Daily Coverage. Industry Leading Perspective.

UPDATE: Heads Up: Down an Eighth of a Point From Highs

Bonds have been almost perfectly flat all day, and we'd still refer to today as flat in the bigger picture.

But amidst that broader sideways grind, MBS have slowly inched down from the AM highs and the gap is now at an eighth of a point in 5.5 coupons. This doesn't constitute any serious negative repricing risk, but could be something to consider for those who were already planning on locking before the weekend and waiting to see if rates would improve.



Deanna Adinolfo-Rivera

Community Lending
Powered by Lower, LLC.

NMLS# 1124061

M: (239) 878-0107

deanna@communitylendingfl.com

8191 College Pkwy Suite 203

Fort Myers, FL 33919

NMLS#327112

