

MBS & TREASURY MARKETS

Daily Coverage. Industry Leading Perspective.

MBS Recap: Flat Friday, But Volatility Risks Remain



Adan Saldana

CEO/Loan Originator,
Laser Mortgage

P: (702) 376-2643

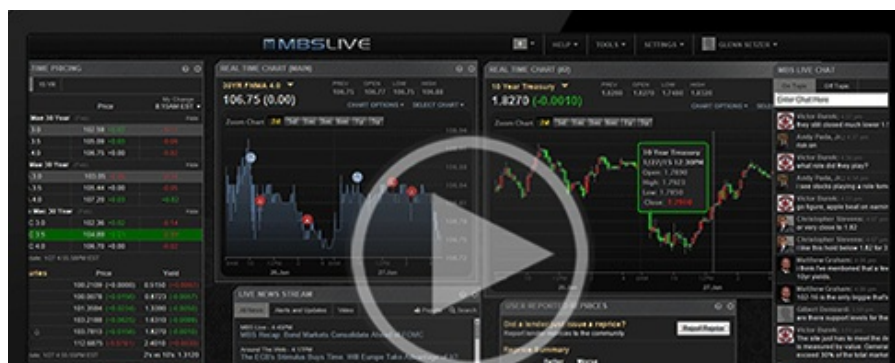
670 S. Green Valley
Henderson Nevada 89052
NMLS 214926

LASER
MORTGAGE

Flat Friday, But Volatility Risks Remain

MBS Recap | Matthew Graham | 5:07 PM

Bonds started weaker, flipped stronger mid-day, and then slowly moved back to unchanged levels by the close. Most of the day's volatility surrounded comments from a Swiss finance minister on this weekend's US/China trade talks (in Switzerland). The movement was very small in the bigger picture, possibly reflecting the very low odds for any sort of trade resolution like yesterday's UK/US deal. Still, over the weekend headlines may provide hints as to where the discussions are headed, and that could be worth some volatility as the coming week begins. A day later, CPI will provide the first big-picture assessment of April's inflation (still exceptionally early when it comes to potential tariff-related impacts, but not too early to see some impact).





[Watch the Video](#)

MBS Morning

11:04 AM Lots of Fed Speakers, But The Focus is on China

Update

3:14 PM Heads Up: Down an Eighth of a Point From Highs

4:50 PM

Market Movement Recap

- 09:59 AM Modestly weaker overnight, but moving back into positive territory now. MBS up 1 tick (.03) and 10yr up 1.8bps at 4.359
- 01:14 PM Mostly flat all morning. MBS up 1 tick (.03) and 10yr down 1.2bps at 4.365
- 04:49 PM Heading out near weakest levels with MBS down 1 tick (.03) and 10yr yields up 0.7bps at 4.384

Lock / Float Considerations

- While the average mortgage lender isn't any worse off than they were earlier this week, the pace of Thursday's movement reintroduces the volatility risk surrounding trade-related headlines. From an econ data standpoint, Tuesday's CPI remains the focus, but random volatility risk is now substantially higher with US/China talks taking place over the weekend.

Technicals/Trends in 10yr (why 10yr)

- Ceiling/Support (can be used as "lock triggers")
 - o 4.64
 - o 4.48
- Floor/Resistance
 - o 3.99
 - o 4.05

- 4.12
- 4.19
- 4.34
- 4.40

MBS & Treasury Markets



MBS

30YR UMBS 5.5	
30YR UMBS 6.0	
30YR GNMA 5.5	+
15YR UMBS-15 5.0	

US Treasuries

10 YR	4.383%	+0.006%
2 YR	3.897%	+0.023%
30 YR	4.838%	+0.006%
5 YR	4.009%	+0.023%

Open Dashboard

Share This