

# MBS & TREASURY MARKETS

Daily Coverage. Industry Leading Perspective.

## MBS Recap: Gentle Rally Gently Reverses After Trade Headlines



**Slav Popach**

Mortgage Broker, Barrett  
Financial Group

[www.barrettfinancial.com](http://www.barrettfinancial.com)

M: (425) 772-1031

[slav@barrettfinancial.com](mailto:slav@barrettfinancial.com)

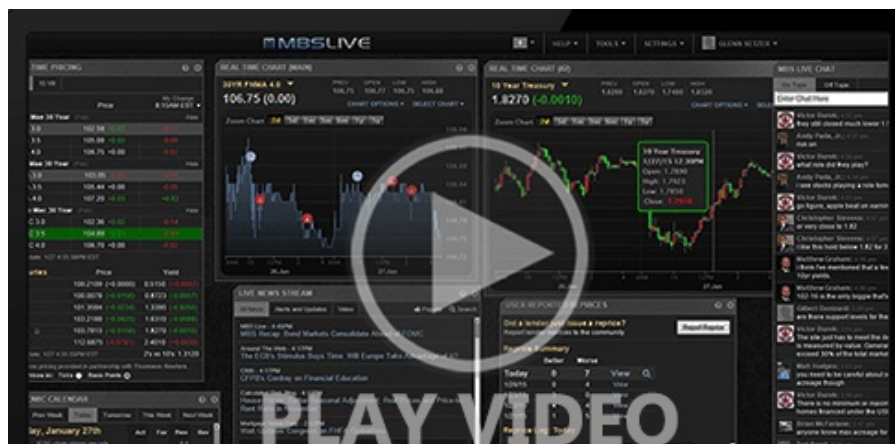
NMLS 1103975



## Gentle Rally Gently Reverses After Trade Headlines

MBS Recap | Matthew Graham | 3:55 PM

First thing's first: bonds closed in stronger territory and retained most of the gains that were present in the AM hours. But they would have done just a bit better if not for a handful of newswires that hit around 2:30pm ET regarding vaguely positive comments on US/China trade talks (i.e. BESSENT ON US-CHINA TALKS: 'GOOD MEETING'). This preceded a move up to 4.487 from 4.470 in 10yr yields--barely worth mentioning in the bigger picture, and only mentioned here to reinforce the market's willingness to react to trade-related headlines and because US/China talks will be continuing on Tuesday.





Watch the Video

## MBS Morning

10:12 AM Shifting Gears After Friday's Volatility

3:43 PM

## Market Movement Recap

09:53 AM Sideways overnight and inching into positive territory after 9:30am NYSE open. MBS up 3 ticks (.09) and 10yr down 1.3bps

## Lock / Float Considerations

- Friday's jobs report reset the board to some extent when it comes to short term lock/float considerations. There was asymmetric risk up until then, and more balanced risk moving forward. The upcoming data is not as meaty, so we could see more of a willingness to react to fiscal headlines.
- Slow, steady gains so far. MBS up 6 ticks (.19) and 10yr down 3.3bps at 4.475
- Weaker since 2:30pm, but still stronger on the day. MBS up 5 ticks (.16) and 10yr down 2.1bps at 4.487

## Technicals/Trends in 10yr (why 10yr)

- **Ceiling/Support** (can be used as "lock triggers")
  - o 4.64
  - o 4.48
- **Floor/Resistance**
  - o 3.99
  - o 4.05
  - o 4.12
  - o 4.19
  - o 4.34
  - o 4.40

MBS & Treasury Markets



MBS

30YR UMBS 5.5	+
30YR UMBS 6.0	+
30YR GNMA 5.5	+
15YR UMBS-15 5.0	+

US Treasuries

10 YR	4.488%	-0.020%
2 YR	4.013%	-0.024%
30 YR	4.957%	-0.006%
5 YR	4.095%	-0.029%

Open Dashboard

Share This