

MBS & TREASURY MARKETS

Daily Coverage. Industry Leading Perspective.

MBS Recap: Dot Plot in Focus With Fed's "No Cut" Announcement

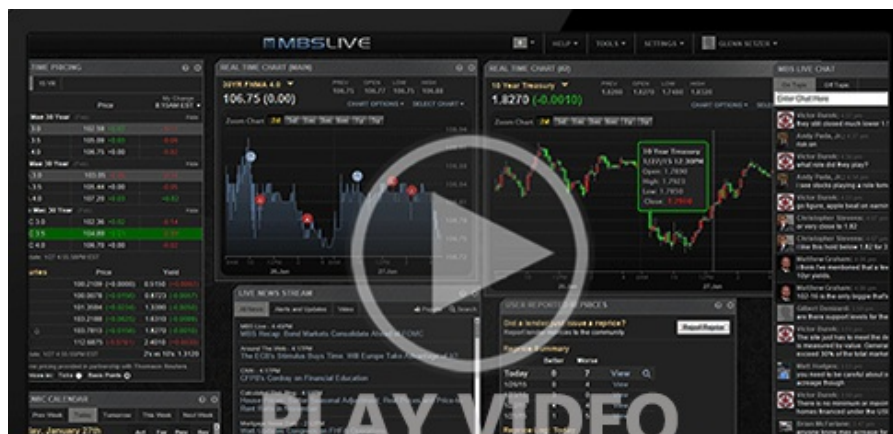


The Metrolina
Mortgage Team
Loan Officer, Fairway
Independent Mortgage
www.MetrolinaFairway.com
P: (561) 523-2226
M: (561) 523-2226
13700 Providence Rd
Weddington NC 28104
1002891

Dot Plot in Focus With Fed's "No Cut" Announcement

MBS Recap | Matthew Graham | 4:31 PM

Bonds lost some ground after this morning's economic data, arguably in response to the Retail Sales control group beating its forecast. Higher-than-expected import prices could also have played a supporting role, but the selling was too modest to worry about perfectly allocating the blame. It was also erased by an afternoon rally that was best explained by general **risk-off** vibes surrounding geopolitical headlines. Here too, we're not seeing anything too compelling in terms of trading justification. The best bet on that front would be Wednesday's dot plot from the Fed (the chart showing each Fed member's rate outlook over the next few years). That will be released at 2pm with the "no cut" announcement.





8:34 AM Retail Sales Mixed; Import Prices Lower

8:42 AM CORRECTION: Import Prices Flat (Not Lower)

10:53 AM Econ Data Not Weak Enough to Help

3:56 PM

- - Retail Sales
 - -0.3 vs 0.1 f'cast, 0.0 prev
 - Core Retail Sales
 - 0.4 vs 0.3 f'cast, -0.1 prev
 - Export Prices
 - -0.9 vs -0.7 f'cast, 0.1 prev
 - Import Prices
 - 0.0 vs -0.2 f'cast, 0.1 prev

09:09 AM Stronger overnight, flat after data, and losing some ground now. MBS still an eighth higher on the day and 10yr down 3.5bps at 4.417

01:53 PM Best levels of the day now on Middle East newswires. MBS up 5 ticks (.16) and 10yr down 6.5bps at 4.386

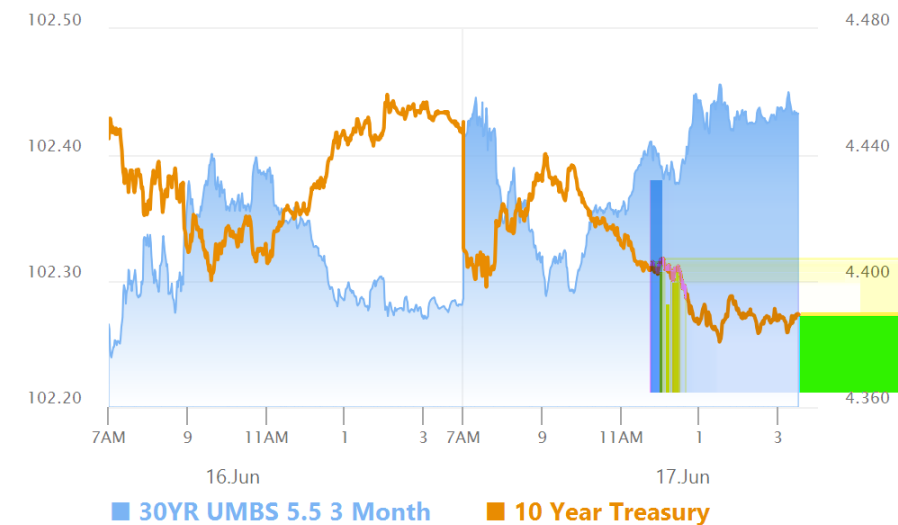
© MBS Live, LLC. All rights reserved. This newsletter is a service of MBS Live.

- Bonds have done what they need to do in order to maintain the prevailing range. This reinforces just how challenging it will be for data to justify a meaningful rate rally (and that it will likely need to be employment data rather than persistently tame inflation). Bond weakness on Friday and Monday make for a more neutral approach to this week's big ticket events, but those events are nonetheless capable of prompting a reaction in either direction.

Technicals/Trends in 10yr (why 10yr)

- **Ceiling/Support** (can be used as "lock triggers")
 - o 4.64
 - o 4.48
- **Floor/Resistance**
 - o 3.99
 - o 4.05
 - o 4.12
 - o 4.19
 - o 4.34
 - o 4.40

MBS & Treasury Markets



MBS

30YR UMBS 5.5	+
30YR UMBS 6.0	+
30YR GNMA 5.5	+
15YR UMBS-15 5.0	+

US Treasuries

10 YR	4.389%	-0.062%
2 YR	3.947%	-0.028%

30 YR
5 YR

4.894%
3.985%

-0.082%
-0.055%

Open Dashboard

Share This