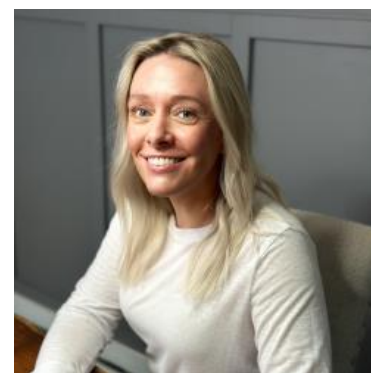
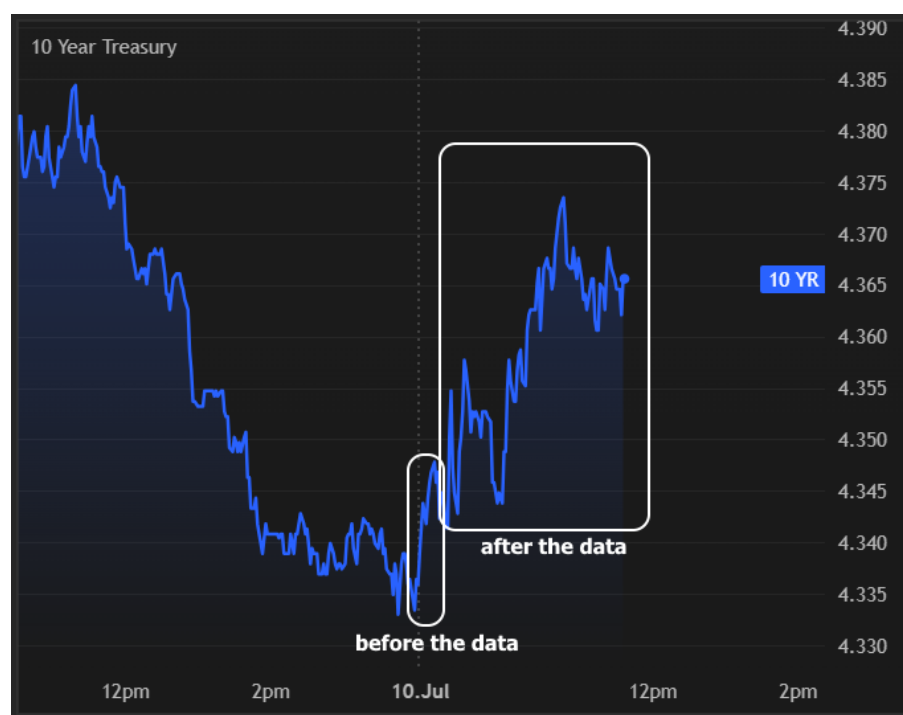


MBS & TREASURY MARKETS

Daily Coverage. Industry Leading Perspective.

The Day Ahead: Week's Only Relevant Data is Not Bond-Friendly

You would be hard pressed to find a week with less to offer in terms of scheduled economic data. In fact, it's not an overstatement to say that regular old weekly jobless claims data was the only relevant report of the week. Unfortunately for fans of low rates, it's not showing any signs of cracks in the labor market (227k vs 235k f'cast). Continuing Claims, while still elevated, also managed to remain below the longer term highs from 3 weeks ago. There hasn't been a huge reaction in the bond market, but perhaps enough to say that we're now in modestly weaker territory instead of being closer to unchanged.



Shannon McAlister

Luminate Home Loans

<https://home-owners-pdx.com/>

M: (503) 516-8881

shannon.mcalister@goluminate.com

NMLS885982

Member
FDIC

