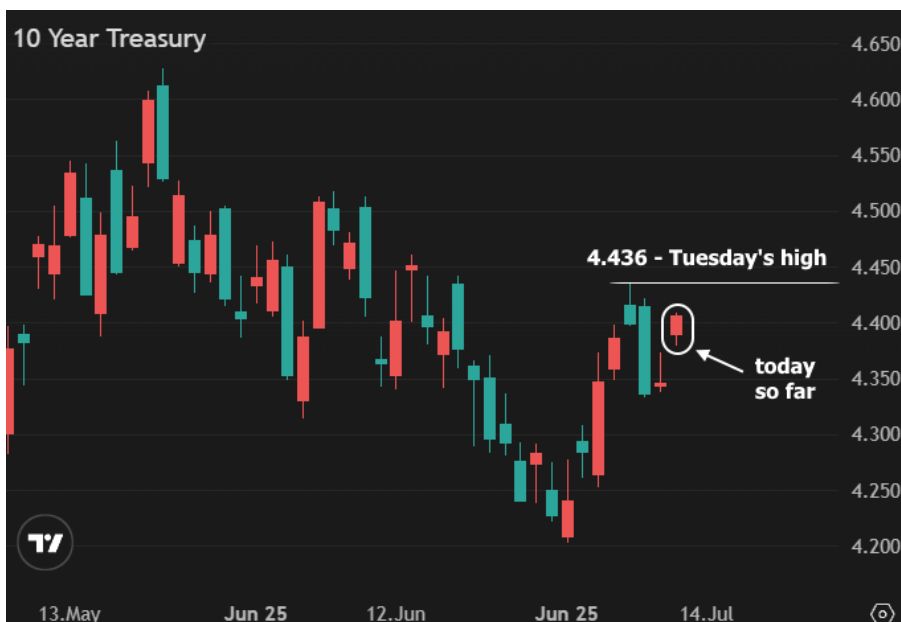


# MBS & TREASURY MARKETS

Daily Coverage. Industry Leading Perspective.

## The Day Ahead: Overnight Selling But Still in The Range

In terms of news that seems like it should be important, the biggest overnight development was the announcement of a 35% tariff on Canadian imports starting August 1st (up from the previously-slated 25%). Exemptions for USMCA goods and energy/fertilizer are probable, but TBD. And of course, it's also possible the deal will change again before August 1st. Nonetheless, when it comes to a top tier trading partner, any durable increase in tariffs is a concern for the bond market from an inflation standpoint. Both stocks and bonds lost ground overnight with 10yr yields pushing up toward (but not over) this week's highs.



**Ray Evans**

Loan Officer, Element  
Home Loans

[www.Elementhl.net](http://www.Elementhl.net)

**P:** (470) 481-3947

**M:** (770) 309-2155

[rayevans@elementhl.com](mailto:rayevans@elementhl.com)

326 Lake Forest Drive  
Newnan GA 30265  
218350

