

MBS & TREASURY MARKETS

Daily Coverage. Industry Leading Perspective.

MBS Recap: What's Up With The Paradoxical CPI Reaction?



Direct Mortgage
Loans

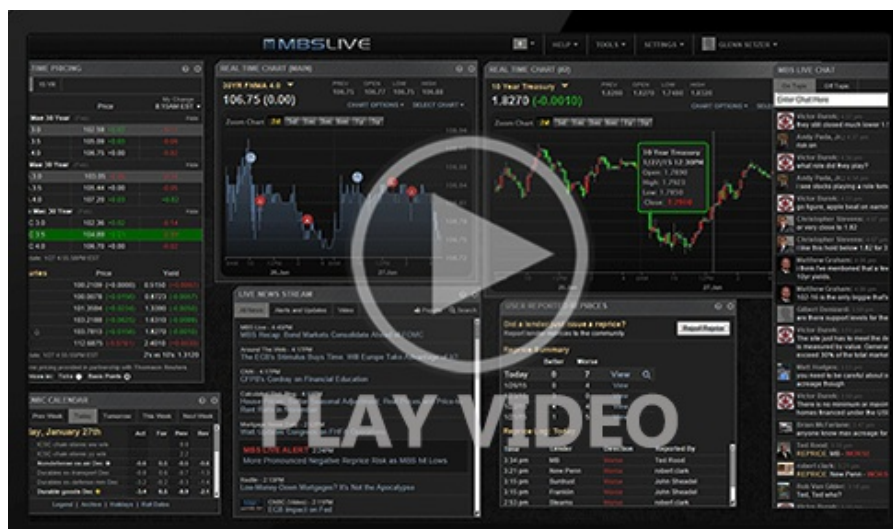
www.directmortgageloans.com
P: (410) 878-9730

11011 McCormick Rd.
Hunt Valley MD 21031
832799

What's Up With The Paradoxical CPI Reaction?

MBS Recap | Matthew Graham | 4:07 PM

Heading into today's data, we knew there was a possibility of two separate reactions--one for the top line CPI numbers and one for a deeper look at the internal components. Those internals show that tariffs are having an impact even though it was a smaller impact than many forecasters were expecting. Bonds didn't seem to care at first. When a new glut of trades came online at the 9:30am NYSE open, that changed. Both stocks and bonds sold off sharply starting at 9:30am and this move looks far more convincing that the initial rally.



[Watch the Video](#)

Update

8:35 AM First Move is Stronger as Core CPI Comes in at 0.2 vs 0.3

MBS Morning

9:29 AM Tariffs Show Up in CPI, But Not Enough to Hurt

Alert

9:45 AM CPI Gains Erased Quickly At 9:30am NYSE Open

Alert

11:31 AM Selling Continues; Reprice Risk Picking Up

3:19 PM

Econ Data / Events

- ○ Core MM CPI
 - 0.228 vs 0.3 f'cast, 0.1 prev
- Core YY CPI
 - 2.9 vs 3.0 f'cast, 2.8 prev
- Headline MM CPI
 - 0.3 vs 0.3 f'cast, 0.1 prev

Market Movement Recap

08:36 AM after CPI 10yr yields are down 2.9bps at 4.406 and MBS are up an eighth

09:45 AM 10yr unchanged 4.434. MBS also unchanged and down just over an eighth from the highs.

11:29 AM weakness continues. MBS down 6 ticks (.19) and 10yr up 4.7 bps at 4.482

02:32 PM Steady, slight selling continues. MBS down 7 ticks (.22) and 10yr up 5.3bps at 4.488

Lock / Float Considerations

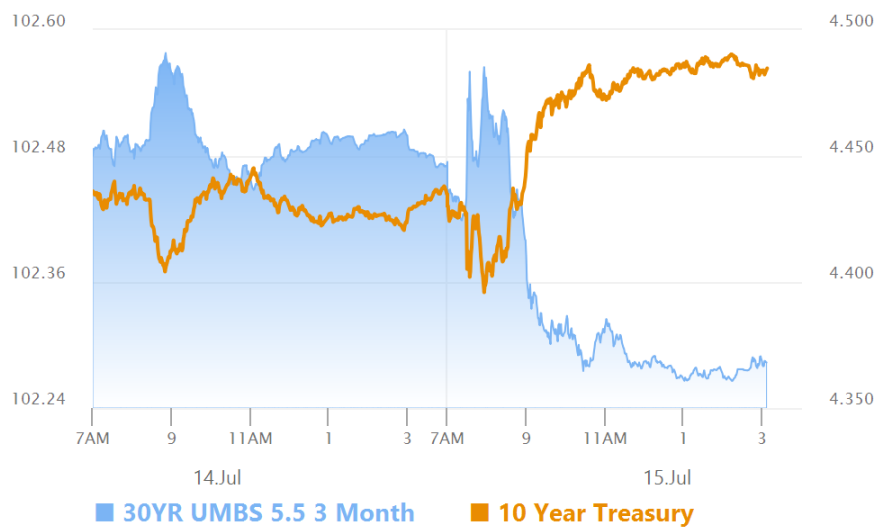
- Tuesday's CPI put spin on the ball. Unfortunately, it was the wrong kind of spin for fans of low rates

Tuesday's CPI put spin on the bull. Unfortunately, it was the wrong kind of spin for fans of low rates. Fortunately, it makes it a bit easier to pick a side in the lock/float debate until this wave of selling pressure subsides.

Technicals/Trends in 10yr (why 10yr)

- Ceiling/Support (can be used as "lock triggers")
 - o 4.64
 - o 4.48
- Floor/Resistance
 - o 3.99
 - o 4.05
 - o 4.12
 - o 4.19
 - o 4.34
 - o 4.40

MBS & Treasury Markets



MBS

30YR UMBS 5.5
 30YR UMBS 6.0
 30YR GNMA 5.5
 15YR UMBS-15 5.0

US Treasuries

10 YR	4.485%	+0.050%
2 YR	3.952%	+0.043%
30 YR	5.015%	+0.035%
5 YR	4.047%	+0.058%

[Open Dashboard](#)

[Share This](#)