

# MBS & TREASURY MARKETS

Daily Coverage. Industry Leading Perspective.

## MBS Recap: Month-End Volatility Erodes Modest Gains

Joshua Daniel

President, NAV Home Loans

P: (303) 929-0578

M: (303) 929-0578

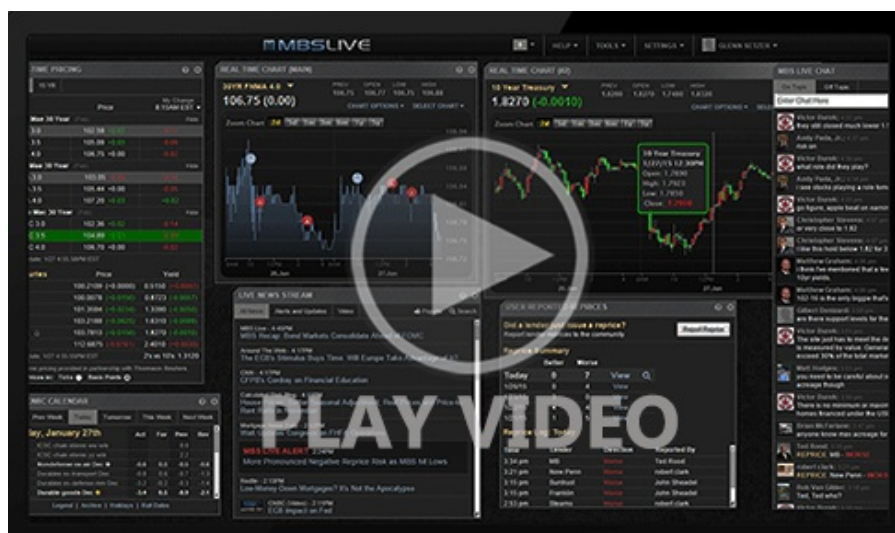
3425 S Inca St  
Englewood Colorado 80110  
2708570



## Month-End Volatility Erodes Modest Gains

MBS Recap | Matthew Graham | 4:46 PM

Bonds were slightly stronger in the overnight session and this morning's economic data did little to change that. The initial reaction may have involved a modicum of selling, but it was fully erased by 11:15am. The PM hours saw both stocks and bonds paring long positions for July's final marks. The typical closing bells (3pm and 4pm) accounted for most of the losses. Bonds ultimately gave up all of the overnight gains, but remain close enough to 'unchanged' heading into Friday's big jobs report.



Watch the Video

Update

8:34 AM Minimal Reaction to Modestly Higher PCE

MBS Morning

10:33 AM No Whammies From PCE

Update

2:36 PM Weakest Levels of The Day

Commentary

3:11 PM What Does July's Data Suggest About Friday's Jobs Report?

Alert

4:04 PM Slightly More Reprice Risk

4:13 PM

Econ Data / Events

- - Challenger layoffs (Jul)
    - 62.075K vs prev 47.999K
  - Continued Claims (Jul 19)
    - 1.946M vs f'cast 1.960M, prev 1.955M
  - Core PCE (m/m) (Jun)
    - 0.3% vs f'cast 0.3%, prev 0.2%
  - Core PCE Inflation (y/y) (Jun)
    - 2.8% vs f'cast 2.7%, prev 2.7%
  - Employment costs (Q2)
    - 0.9% vs f'cast 0.8%, prev 0.9%
  - Inflation-Adjusted Spending (Consumption) (Jun)
    - 0.3% vs f'cast 0.4%, prev 0.0%
  - Jobless Claims (Jul 26)
    - 218K vs f'cast 224K, prev 217K
  - Personal Income (Jun)
    - 0.3% vs f'cast 0.2%, prev -0.4%

Market Movement Recap

08:34 AM Little changed from stronger overnight levels after data. MBS are up just over an eighth and 10yr yields are down 3bps at 4.345

11:49 AM resilience into late AM hours. 10yr down 4bps at 4.325 and MBS up an eighth

02:40 PM resilience into late AM hours. 10yr down 4bps at 4.359, but at highs of day. MBS are still up 2 ticks (.06), but at the lows of the day.

04:04 PM weakest levels. MBS unchanged and 10yr down only half a bp at 4.369

## Lock / Float Considerations

- As always, all bets are off ahead of the month's most important economic report (jobs report/NFP). Late day weakness creates some asymmetric risk toward higher rates (for lenders who don't reprice for the worse). In other words, if NFP were to have zero impact on rates, the bias is slightly in favor of locking. That said, NFP can, of course, have a very large impact on rates for better or worse.

## Technicals/Trends in 10yr (why 10yr)

- Ceiling/Support (can be used as "lock triggers")
  - o 4.64
  - o 4.48
- Floor/Resistance
  - o 3.99
  - o 4.05
  - o 4.12
  - o 4.19
  - o 4.34
  - o 4.40

## MBS & Treasury Markets



## MBS

30YR UMBS 5.5

30YR UMBS 6.0

30YR GNMA 5.5

15YR UMBS-15 5.0

## US Treasuries

10 YR	4.381%	+0.006%
2 YR	3.960%	+0.018%
30 YR	4.904%	+0.001%
5 YR	3.977%	+0.016%

Open Dashboard

Share This