

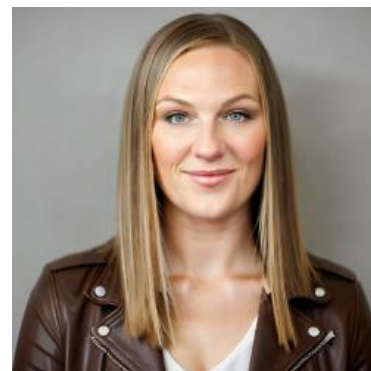
MBS & TREASURY MARKETS

Daily Coverage. Industry Leading Perspective.

ALERT: Huge Jump in PPI Hurting Bonds

- Core PPI
 - 0.9 vs 0.2 f'cast, 0.0 prev
- Annual Core PPI
 - 3.7 vs 2.9 f'cast, 2.6 prev

This is an exceptionally large miss for inflation data and while PPI is not the same caliber of market mover as CPI, it's instantly causing problems for bonds. 10yr yields were down several bps on the day, but are now up half a bp at 4.246. MBS are back to unchanged after starting out an eighth of a point higher.



Stacy Martinez

Mortgage Broker/Owner,
Mortgage Marketplace,
LLC

mortgagemarketplace.biz/.../stacy-martinez

P: 5035603060

M: 5035603060

3723 Fairview Industrial Dr SE
Salem OR 97302- ____
2227274

