

MBS & TREASURY MARKETS

Daily Coverage. Industry Leading Perspective.

MBS Recap: Bonds Hold The Range Despite More Data-Driven Volatility

Jason Brookes

Broker, Grand Avenue
Realty & Lending

www.GrandAveLending.com

P: (562) 233-8564

4420 E. Miraloma Ave, Ste M
Anaheim California 92807

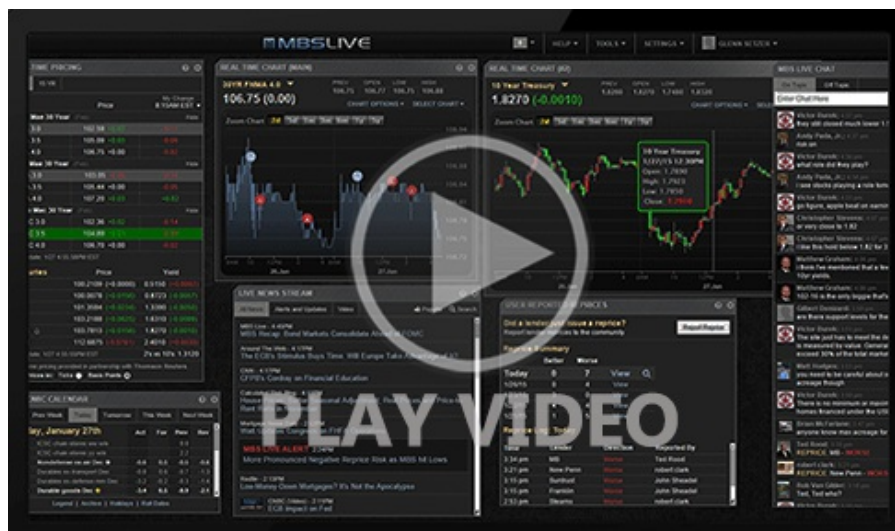
NMLS 1372327

DRE 1412977

Bonds Hold The Range Despite More Data-Driven Volatility

MBS Recap | Matthew Graham | 2:27 PM

At 0.9, not only did today's PPI crush the 0.2 forecast, but it's also the highest reading since post-covid hyper-inflation by a wide margin. And while there's always a chance it will be revised to something less alarming next month, it was enough to do noticeable damage to bonds today. Before the data, 10yr yields were knocking on the yield floor at 4.20%. This afternoon, they're up closer to 4.30%. Things could have been even worse if not for the fact that the PCE components in the PPI data suggested a much less onerous impact on the PCE data that will come out in 2 weeks. Nonetheless, it will be enough to keep eyebrows raised regarding the extent to which tariffs are hindering a return to the 2% inflation target (something that will unfortunately be up in the air for many months).



Watch the Video

Alert

8:34 AM Huge Jump in PPI Hurting Bonds

10:58 AM Producer Prices Surge, Complicating The Rate Cut Outlook

Alert

11:37 AM Additional Weakness. Some Negative Reprice Risk

1:42 PM

Econ Data / Events

- ○ Core PPI
 - 0.9 vs 0.2 f'cast, 0.0 prev
- Annual Core PPI
 - 3.7 vs 2.9 f'cast, 2.6 prev
- Jobless Claims
 - 224k vs 228k f'cast, 227k prev

Market Movement Recap

- 08:43 AM stronger overnight but losing ground after PPI. MBS unchanged and 10yr nearly unchanged at 4.237
- 11:14 AM Additional weakness now. MBS down an eighth and 10yr up 3.7bps at 4.278
- 11:45 AM MBS down 6 ticks (.19) and 10yr up 5bps at 4.291
- 01:38 PM Off the weakest levels. MBS down 5 ticks (.16) and 10yr up 4.8bps at 4.289

Lock / Float Considerations

- After a lower consequence day on Wednesday, risk/reward increase somewhat on Thursday and Friday with the return of econ data (PPI on Thursday and Retail Sales on Friday). Risk-tolerant clients still have plenty of room between here and the 4.40% technical level to set overhead lock triggers. Risk-averse clients still have the lowest rates in 10 months.

Technicals/Trends in 10yr (why 10yr)

- Ceiling/Support (can be used as "lock triggers")
 - 4.64
 - 4.48
 - 4.40
 - 4.34
 - 4.28
- Floor/Resistance
 - 3.99
 - 4.05
 - 4.12
 - 4.19

MBS & Treasury Markets



MBS		
30YR UMBS 5.5		
30YR UMBS 6.0		
30YR GNMA 5.5		
15YR UMBS-15 5.0		

US Treasuries		
10 YR	4.293%	+0.052%
2 YR	3.741%	+0.066%
30 YR	4.881%	+0.055%
5 YR	3.823%	+0.073%

[Open Dashboard](#)

[Share This](#)