

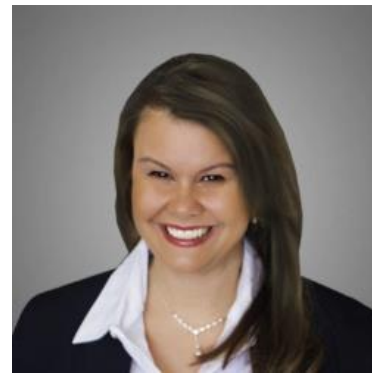
MBS & TREASURY MARKETS

Daily Coverage. Industry Leading Perspective.

UPDATE: PCE Right In Line With Expectations

- Core PCE (m/m) (Jul)
 - 0.3% vs 0.3% f'cast, 0.3% prev
- Core PCE Inflation (y/y) (Jul)
 - 2.9% vs 2.9% f'cast, 2.8% prev
- Inflation-Adjusted Spending (Consumption) (Jul)
 - 0.5% vs 0.5% f'cast, 0.3% prev
- Personal Income (Jul)
 - 0.4% vs 0.4% f'cast, 0.3% prev
- Wholesale inventories mm (Jul)
 - 0.2% vs 0.2% f'cast, 0.1% prev

Bonds were slightly weaker to start the day, but haven't moved much in the wake of the as-expected PCE numbers. Any detectable movement has been microscopically stronger, if anything. MBS are down 2 ticks (.06) and 10yr yields are up 1.4bps at 4.22.



Deanna Adinolfo-Rivera

Community Lending
Powered by Lower, LLC.

NMLS# 1124061

M: (239) 878-0107

deanna@communitylendingfl.com

8191 College Pkwy Suite 203
Fort Myers, FL 33919

NMLS #327112

