

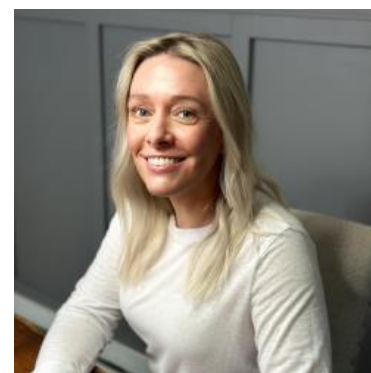
MBS & TREASURY MARKETS

Daily Coverage. Industry Leading Perspective.

UPDATE: PCE Right In Line With Expectations

- Core PCE (m/m) (Jul)
 - 0.3% vs 0.3% f'cast, 0.3% prev
- Core PCE Inflation (y/y) (Jul)
 - 2.9% vs 2.9% f'cast, 2.8% prev
- Inflation-Adjusted Spending (Consumption) (Jul)
 - 0.5% vs 0.5% f'cast, 0.3% prev
- Personal Income (Jul)
 - 0.4% vs 0.4% f'cast, 0.3% prev
- Wholesale inventories mm (Jul)
 - 0.2% vs 0.2% f'cast, 0.1% prev

Bonds were slightly weaker to start the day, but haven't moved much in the wake of the as-expected PCE numbers. Any detectable movement has been microscopically stronger, if anything. MBS are down 2 ticks (.06) and 10yr yields are up 1.4bps at 4.22.



Shannon McAlister

Luminate Home Loans

<https://home-owners-pdx.com/>

M: (503) 516-8881

shannon.mcalister@goluminate.com

NMLS885982

Member
FDIC

