

# MBS & TREASURY MARKETS

Daily Coverage. Industry Leading Perspective.

## MBS Recap: Calm Day to End A Calm Week



### Jeffrey Chalmers

Senior Loan Officer,  
Movement Mortgage  
Licensed: CA, FL, MA, ME,  
NH, VT

[ClicknFinance.com](http://ClicknFinance.com)

M: (774) 291-6527

99 Rosewood Dr, Suite 270  
Danvers MA 01923

NMLS #76803

NMLS #39179



### Lisa Biggar, REALTOR®

Buyer & Listing Expert,  
LAER Realty Partners

[www.LisaBiggar.com](http://www.LisaBiggar.com)

M: (978) 578-0023

[Lisa@LisaBiggar.com](mailto:Lisa@LisaBiggar.com)

40 Park St, Suite 9  
Attleboro MA 02703

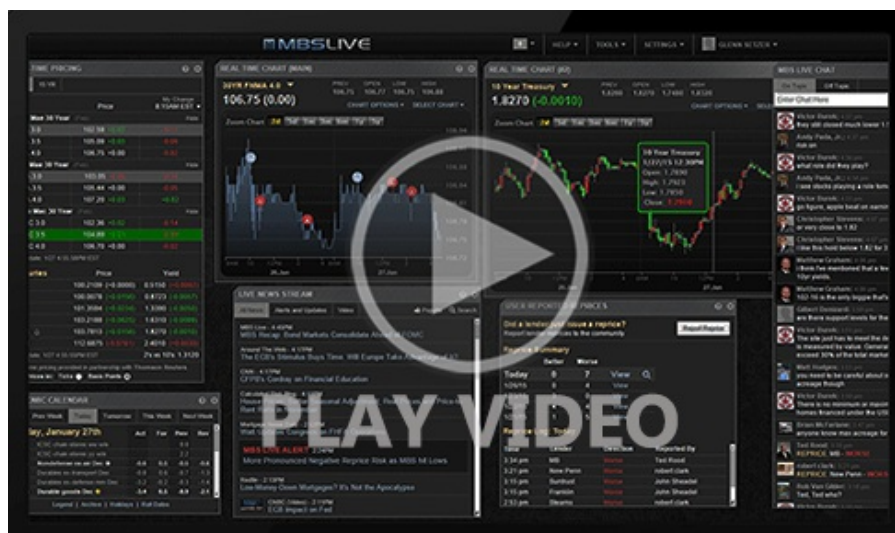
MA License #9061998

RI License #RES.0047220

# Calm Day to End A Calm Week

MBS Recap | Matthew Graham | 4:20 PM

While Friday itself may not have resulted in a rally for the broader bond market, it was nonetheless just as calm as any other day this week in terms of volatility. That's a bit more impressive considering it was the only day with big-ticket econ data. Overall, the week was marked by slow, steady gains for no particular reason. With that, the entirety of August, post-jobs-report did exactly what it was supposed to do. Specifically, it held a narrow enough range to avoid challenging the range set by the last jobs report day. The upcoming week--while shorter than normal due to the Labor Day holiday--is infinitely more capable of producing bond market volatility. Even the supporting actors are arguably heavy hitters in terms of econ data. Friday's jobs report speaks for itself. Bottom line: additional labor market weakness could easily help bonds break new ground at lower yields while unexpected resilience could firmly reinforce recent floors.



[Watch the Video](#)

## Update

8:33 AM PCE Right In Line With Expectations

## MBS Morning

11:43 AM PCE Inflation Offers No Surprises

3:05 PM

## Econ Data / Events

- ○ Core PCE (m/m) (Jul)
  - 0.3% vs 0.3% f'cast, 0.3% prev
- Core PCE Inflation (y/y) (Jul)
  - 2.9% vs 2.9% f'cast, 2.8% prev
- Inflation-Adjusted Spending (Consumption) (Jul)
  - 0.5% vs 0.5% f'cast, 0.3% prev
- Personal Income (Jul)
  - 0.4% vs 0.4% f'cast, 0.3% prev
- Wholesale inventories mm (Jul)
  - 0.2% vs 0.2% f'cast, 0.1% prev
- Chicago PMI (Aug)
  - 41.5 vs 46 f'cast, 47.1 prev
- Consumer Sentiment (Aug)
  - 58.2 vs 58.6 f'cast, 61.7 prev
- Sentiment: 1y Inflation (Aug)
  - 4.8% vs 4.9% f'cast, 4.5% prev
- Sentiment: 5y Inflation (Aug)
  - 3.5% vs 3.9% f'cast, 3.4% prev

## Market Movement Recap

08:34 AM Minimal movement after PCE data. MBS are down 2 ticks (.06) and 10yr yields are up 1.4bps at 4.22.

01:03 PM Slightly stronger heading into PM. MBS down only 1 tick (.03) and 10yr up 1.9bps at 4.224

## Lock / Float Considerations

- With rates hitting 10-month lows 4 times this week, risk-averse clients are still in lock mode. Risk-tolerant clients have enjoyed a very narrow rate range in August, but they should be aware that the coming week is all but guaranteed to see a much wider range, for better or worse.

## Technicals/Trends in 10yr (why 10yr)

- Ceiling/Support (can be used as "lock triggers")
  - o 4.64
  - o 4.48
  - o 4.40
  - o 4.34
  - o 4.28
- Floor/Resistance
  - o 3.99
  - o 4.05
  - o 4.12
  - o 4.19

MBS & Treasury Markets

MBS		
30YR UMBS 5.5		
30YR UMBS 6.0		
30YR GNMA 5.5		
15YR UMBS-15 5.0		+
US Treasuries		
10 YR	4.229%	+0.024%
2 YR	3.619%	-0.010%
30 YR	4.926%	+0.051%
5 YR	3.696%	+0.007%

Open Dashboard

Share This