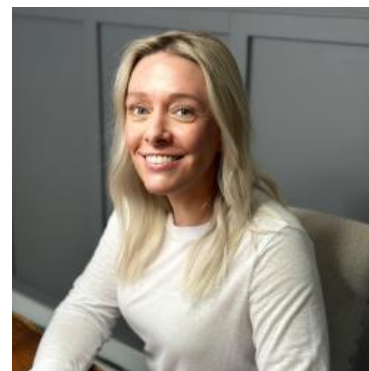


# MBS & TREASURY MARKETS

Daily Coverage. Industry Leading Perspective.

## **ALERT:** New Lows. More Reprice Risk

If you haven't seen a reprice for the worse yet, chances are increasing. MBS are now down 6 ticks (.19) from many lenders' rate sheet print times versus 4 ticks (.125) at the time of the previous alert.



**Shannon McAlister**

Luminate Home Loans

<https://home-owners-pdx.com/>

**M:** (503) 516-8881

[shannon.mcalister@goluminate.com](mailto:shannon.mcalister@goluminate.com)

NMLS885982

Member  
**FDIC**

