

# MBS & TREASURY MARKETS

Daily Coverage. Industry Leading Perspective.

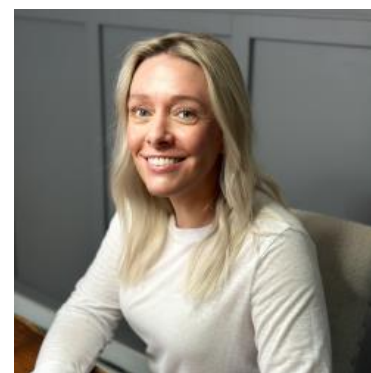
## ALERT: Losing Ground After Retail Sales

- Export prices mm (Aug)
  - 0.3% vs 0% f'cast, 0.1% prev
- Import prices mm (Aug)
  - 0.3% vs -0.1% f'cast, 0.4% prev
- Retail Sales (Aug)
  - 0.6% vs 0.2% f'cast, 0.5% prev
- Retail Sales (ex-autos) (Aug)
  - 0.7% vs 0.4% f'cast, 0.3% prev
- **Retail Sales Control Group MoM (Aug)**
  - **0.7% vs 0.4% f'cast, 0.5% prev**

No downward revisions to last month's decent retail sales readings and a much stronger than expected result for the current report...

This is putting clear and immediate upward pressure on yields with 10yr TSYs up almost 2 bps in the first few minutes (currently 4.058).

MBS are down a quick 2 ticks (.06).



**Shannon McAlister**

Luminate Home Loans

<https://home-owners-pdx.com/>

**M:** (503) 516-8881

[shannon.mcalister@goluminate.com](mailto:shannon.mcalister@goluminate.com)

NMLS885982

Member  
**FDIC**

