

# MBS & TREASURY MARKETS

Daily Coverage. Industry Leading Perspective.

## MBS Recap: Modestly Stronger After No Whammies From Powell



**Joe Rapisarda**

Mortgage Broker, Pacific  
Community Lender

[Vacavillehomeloans.com](http://Vacavillehomeloans.com)

M: 707-208-1916

190 South Orchard Ave #B115  
Vacaville CA 95688-\_\_\_\_  
230222



Member  
**FDIC**



## Modestly Stronger After No Whammies From Powell

MBS Recap | Matthew Graham | 4:15 PM

Last week's press conference with Fed Chair Powell could be summed up as "more **hawkish** than the market expected." After being compounded by strong econ data on Thursday morning, the selling spree ran its course and we've been mostly sideways over the past 3 days. Today ended up being the best version of sideways with yields almost making it back to Thursday's closing levels. Most of the move happened after Powell finished a Q&A this afternoon. This suggests traders were relieved that he didn't reinforce the **hawkish** talking points from last week. All told, it wasn't a big move, but it was a friendly one nonetheless.





Watch the Video

## MBS Morning

11:03 AM Which Powell Will We Get Today?

3:42 PM

## Econ Data / Events

- ○ S&P Global Composite PMI (Sep)
  - 53.6 vs 54.6 f'cast, 55.1 prev
- S&P Global Manuf. PMI (Sep)
  - 52 vs 52 f'cast, 53.0 prev
- S&P Global Services PMI (Sep)
  - 53.9 vs 54 f'cast, 54.5 prev

## Market Movement Recap

- 09:56 AM Modestly stronger overnight. No major reaction to PMI data. MBS up 2 ticks (.06) and 10yr down 1.2 bps at 4.138
- 12:53 PM MBS unchanged and 10yr down 1.2bps at 4.137
- 01:47 PM Making some gains after Powell Q&A. MBS up an eighth of a point and 10yr down 3.6bps at 4.112
- 03:52 PM heading out near best levels. MBS up 5 ticks (.16) and 10yr down 4bps at 4.109

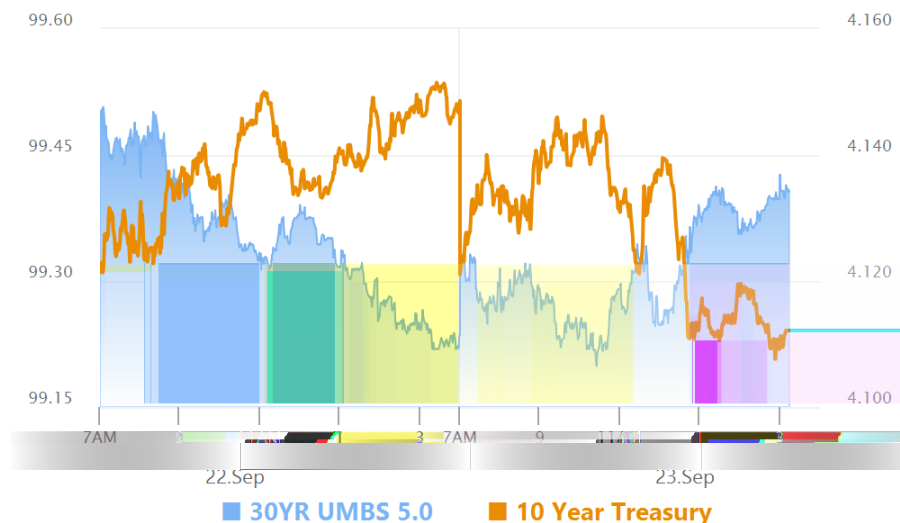
## Lock / Float Considerations

- Tuesday's session brought the best evidence yet that last week's post-Fed selling had run its course by Thursday afternoon. This brings risk/reward back to lower, more balanced levels.

## Technicals/Trends in 10yr (why 10yr)

- Ceiling/Support (can be used as "lock triggers")
  - o 4.48
  - o 4.40
  - o 4.34
  - o 4.28
  - o 4.19
- Floor/Resistance
  - o 3.89
  - o 3.99
  - o 4.05
  - o 4.12

## MBS & Treasury Markets



### MBS

30YR UMBS 5.0	+
30YR UMBS 5.5	+
30YR GNMA 5.0	+
15YR UMBS-15 5.0	+

### US Treasuries

10 YR	4.112%	-0.037%
2 YR	3.590%	-0.010%
30 YR	4.727%	-0.038%
5 YR	3.673%	-0.031%

---

[Open Dashboard](#)

[Share This](#)