

# MORTGAGE RATE WATCH

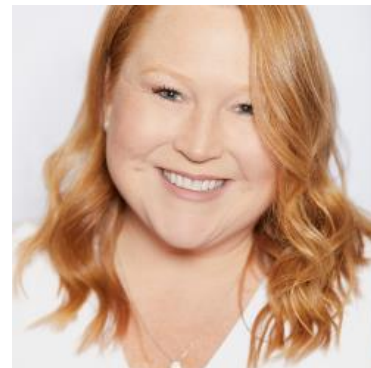
Daily Coverage. Industry Leading Perspective.

## Mortgage Rates Continue Holding Narrow Range

Mortgage rates were just barely lower this morning versus yesterday's latest levels, but most borrowers won't see any major difference from any of the past 7 business days. Additionally, some lenders issued mid-day changes, giving rates a slight bump in response to weakness in the bond market.

With a government shutdown looking increasingly likely, traders are increasingly less likely to see the latest jobs report, originally scheduled for this Friday. This morning's econ data isn't in the same league as the jobs report, but it did provide a modest benefit for rates with job openings remaining low and consumer confidence falling.

The bond market weakness in the afternoon was a function of the month/quarter end trading environment which creates market momentum without regard to timely economic data releases.



### Corri Klebaum

Certified Mortgage  
Advisor, Edge Home  
Finance Corporation

[teamklebaum.com](http://teamklebaum.com)

**P:** (541) 605-2154

**M:** (503) 975-5005

[corri@teamklebaum.com](mailto:corri@teamklebaum.com)

1214 Adams Ave  
La Grande OR 97850

NMLS #211442

Edge Home Finance Corporation |  
NMLS #891464

