

# MBS & TREASURY MARKETS

Daily Coverage. Industry Leading Perspective.

## MBS Recap: Complete Silence After AM Volatility

Rich Hayden

Branch Manager | Loan  
Officer, Milestone  
Mortgage Solutions LLC

[milestonemortgagesolutions.com](http://milestonemortgagesolutions.com)

M: (703) 957-0790

[rhayden@milestonemortgagesolutions.com](mailto:rhayden@milestonemortgagesolutions.com)

128 Union Street, Suite 101  
New Bedford MA 02740

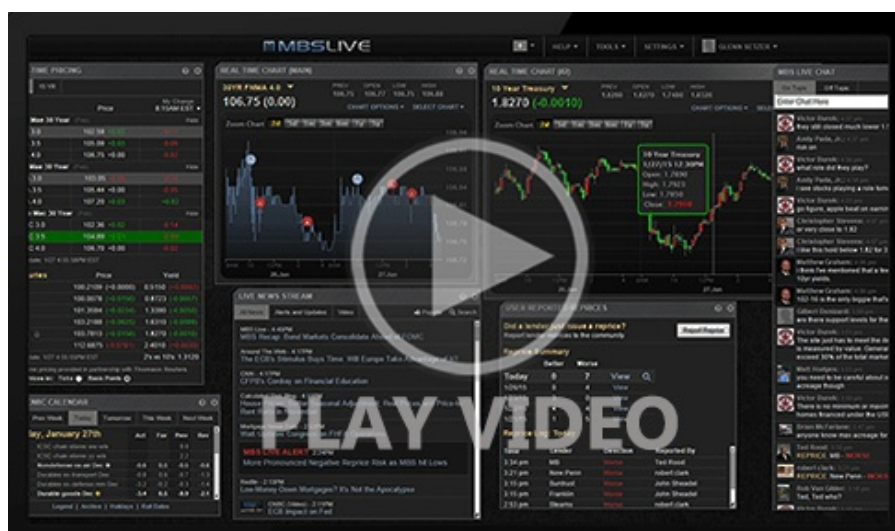
Loan Officer NMLS#189081  
Company NMLS#1815656



## Complete Silence After AM Volatility

MBS Recap | Matthew Graham | 4:02 PM

Bonds were mostly flat overnight before a sharp sell-off from 8am through 10am ET. After that, momentum went flat again--especially the last 4 hours of trading. No one is still debating whether or not the AM sell-off was due to Japan's central bank news or a post-holiday return to reality. Yields are back in the pre-Thanksgiving range and ready to respond to this week's bigger-ticket econ reports.



Watch the Video

10:13 AM Breaking Down Early Weakness. Is It Japan?

3:45 PM

## Econ Data / Events

- ○ ISM Manufacturing Employment (Nov)
  - 44.0 vs -- f'cast, 46.0 prev
- ISM Manufacturing PMI (Nov)
  - 48.2 vs 48.6 f'cast, 48.7 prev
- ISM Mfg Prices Paid (Nov)
  - 58.5 vs 59.5 f'cast, 58.0 prev

## Market Movement Recap

- 09:27 AM Mostly flat overnight but selling steadily since 8am. MBS down a quarter point and 10yr up 6.9bps at 4.084
- 11:09 AM No reaction to ISM data. Holding at weakest levels. MBS down 9 ticks (.28) and 10yr up 7.6bps at 4.09
- 02:34 PM Steady at weakest levels. MBS still down 9 ticks (.28) and 10yr up 7.9bps at 4.093

## Lock / Float Considerations

- With holiday-related gyrations in the rearview, rates are in a familiar range seen throughout most of November. Risk/reward is more straightforward in the coming days with economic data standing the best chance to cause volatility.

## Technicals/Trends in 10yr (why 10yr)

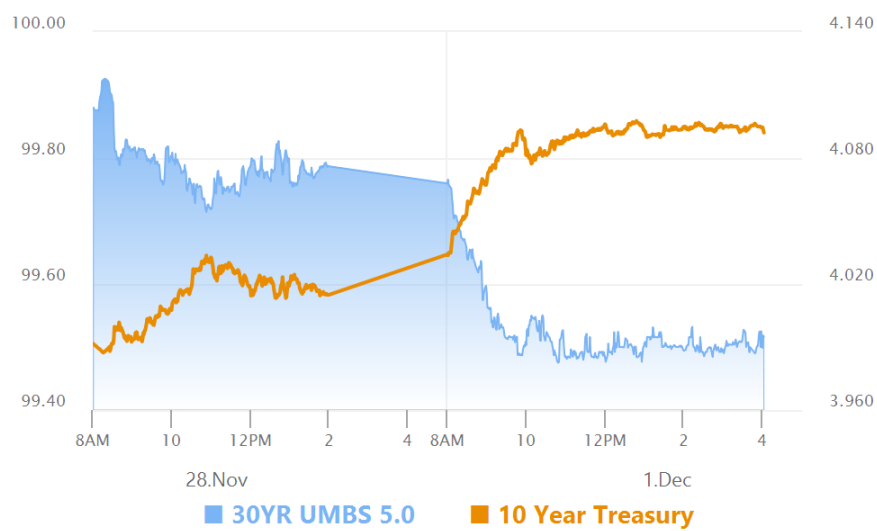
- **Ceiling/Support** (can be used as "lock triggers")
  - 4.48
  - 4.40

- 4.34
- 4.28
- 4.19
- 4.12
- 4.05

- Floor/Resistance

- 3.89
- 3.97

MBS & Treasury Markets



MBS

- 30YR UMBS 5.0
- 30YR UMBS 5.5
- 30YR GNMA 5.0
- 15YR UMBS-15 5.0

US Treasuries

10 YR	4.092%	+0.078%
2 YR	3.535%	+0.041%
30 YR	4.742%	+0.077%
5 YR	3.669%	+0.071%

Open Dashboard

Share This