

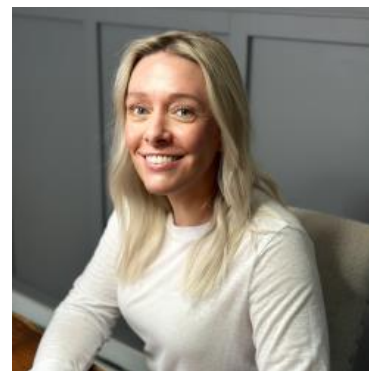
# MBS & TREASURY MARKETS

Daily Coverage. Industry Leading Perspective.

## **ALERT:** MBS Down an Eighth From AM Highs

This is more of a heads-up alert for the earlier, jumpier lenders (especially those who priced around 9:30am). Since that time, MBS prices are down an eighth of a point. This is the earliest threshold for the jumpiest lenders to consider negative reprices.

10yr yields are up 3bps at 4.128--still very much within the prevailing range. MBS are down only 3 ticks (.09) on the day.



**Shannon McAlister**

Luminate Home Loans

<https://home-owners-pdx.com/>

**M:** (503) 516-8881

[shannon.mcalister@goluminate.com](mailto:shannon.mcalister@goluminate.com)

NMLS885982

