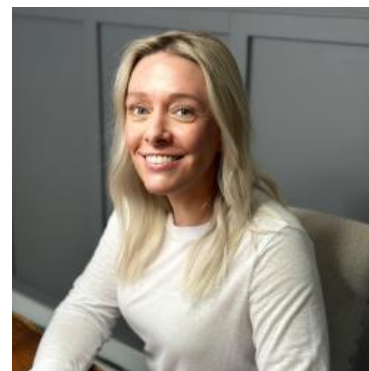


# MBS & TREASURY MARKETS

Daily Coverage. Industry Leading Perspective.

## **ALERT:** Sharper Selling After NYSE Open

Bonds were only slightly weaker before the 9:30am NYSE open, but losses have been sharper since then. 10yr yields are up 3.6bps at 4.173 and MBS are down 7 ticks (.22). Lenders who priced before 9:45am are already seeing nearly 6 ticks (.19) of weakness. A few of the jumpiest lenders have been known to reprice for the worse in similar situations.



**Shannon McAlister**

Luminate Home Loans

<https://home-owners-pdx.com/>

**M:** (503) 516-8881

[shannon.mcalister@goluminate.com](mailto:shannon.mcalister@goluminate.com)

NMLS885982

