

MBS & TREASURY MARKETS

Daily Coverage. Industry Leading Perspective.

UPDATE: No Major Reaction to Rate Cut and Dot Plot Yet

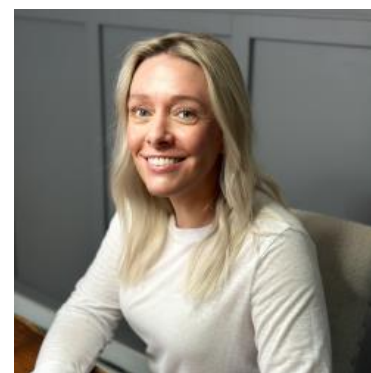
The Fed cut rates as expected, and the dot plot didn't show any major migration higher in rate. In fact, the median remained unchanged and more dots moved down than up.

Before and After Dot Plot Comparison



MBS haven't moved since the release and are still up a quarter point. 10yr yields are down just a hair vs 2pm levels, and down a total of 3.1bps at 4.155 overall.

Very uneventful reaction so far.



Shannon McAlister

Luminate Home Loans

<https://home-owners-pdx.com/>

M: (503) 516-8881

shannon.mcalister@goluminate.com

NMLS885982

