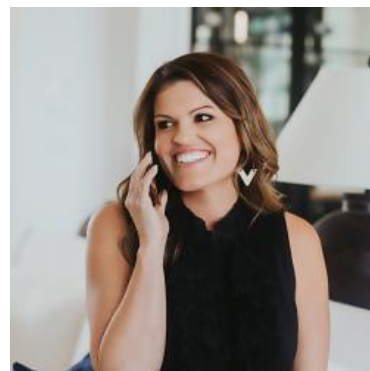


MBS & TREASURY MARKETS

Daily Coverage. Industry Leading Perspective.

ALERT: Down More Than an Eighth From Highs

MBS are still slightly stronger on the day but now down 6 ticks (.19) from the AM price plateau. This is definitely in the range of potential repricing risk scenarios.



Ashlynn Kelso

Senior Loan Officer, RWM
Home Loans

www.ashlynnkelsoteam.com

M: (737) 444-1002

ashlynnkelso@gmail.com

700 S Austin Ave Suite 202
Georgetown Texas 78626
1074888

