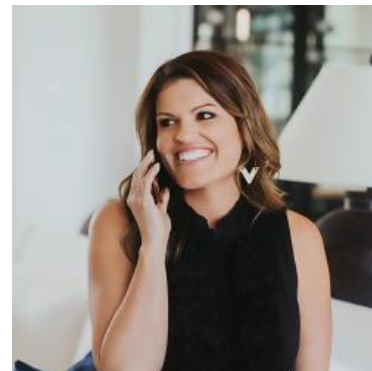


# MBS & TREASURY MARKETS

Daily Coverage. Industry Leading Perspective.

## **ALERT:** MBS Down an Eighth From Highs

Bonds have been selling fairly steadily since 10am with 10yr yields now down less than half a bp at 4.176 and MBS up only 1 tick (.03) on the day. 5.0 MBS coupons are down an eighth of a point from the AM highs seen just after 10am. Lenders who published rate sheets around the time could technically justify a negative reprice, but risks would be higher if MBS turn negative on the day.



### Ashlynn Kelso

Senior Loan Officer, RWM  
Home Loans

[www.ashlynnkelsoteam.com](http://www.ashlynnkelsoteam.com)

**M:** (737) 444-1002

[ashlynnkelso@gmail.com](mailto:ashlynnkelso@gmail.com)

700 S Austin Ave Suite 202  
Georgetown Texas 78626  
1074888

