

MBS & TREASURY MARKETS

Daily Coverage. Industry Leading Perspective.

A message from Marc Erickson:

For informational purposes only. This is not a commitment to lend or extend credit. Information and/or dates are subject to change without notice. All loans are subject to credit approval. Rates vary based upon market conditions and borrower qualification.

MBS Recap: Bond Market in Holiday Mode



Marc Erickson

Mortgage Guide, Excel
Financial Group, LLC

www.themortgagemarc.com

P: (720) 295-0704

M: (720) 295-0704

123 N College Avenue
Fort Collins CO 80524
1245157



Ehric Wolfe

REALTOR®, Coldwell
Banker Realty

www.coloradowolfehomes.com

P: (970) 691-5299

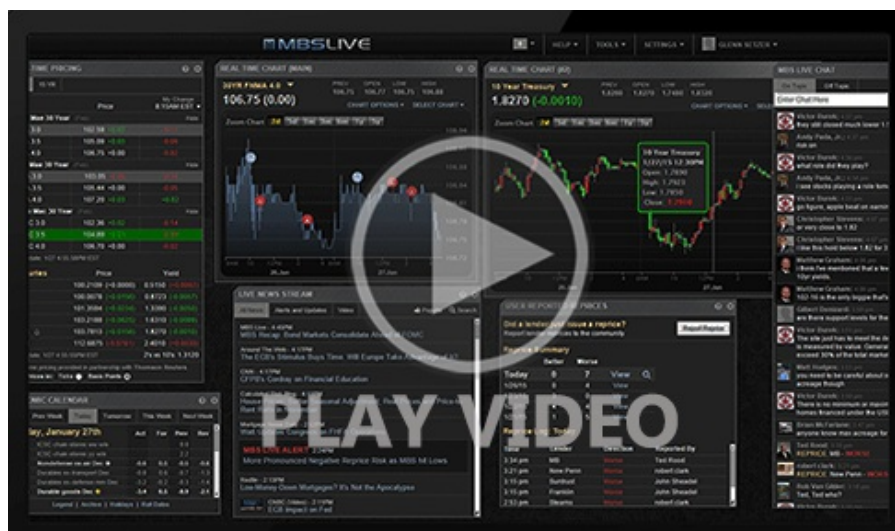
ehric@coloradowolfehomes.com

3665 John F Kennedy Parkway
Fort Collins CO 80525



Bond Market in Holiday Mode

Holiday mode is impossible to clearly define when it comes to its impact on the bond market. We know it when we see it, and we saw it today. Bonds paid no attention to econ data no matter how much it may seem that the 10am Consumer Sentiment numbers had an impact. Movement was minimal and not visibly tied to any other motivation. And as we already discussed this morning, Japan's rate hike was a non-event. Holiday trading randomness will get worse over the next 2 weeks before it improves in early January.



Watch the Video

MBS Morning

10:11 AM Slightly Weaker. No, It's Not Japan

4:20 PM

Econ Data / Events

- ○ Consumer Sentiment (Dec)
 - 52.9 vs 53.4 f'cast, 51.0 prev
- Existing home sales (Nov)
 - 4.13M vs 4.2M f'cast, 4.1M prev
- Sentiment: 1y Inflation (Dec)
 - 4.2% vs 4.1% f'cast, 4.5% prev
- Sentiment: 5y Inflation (Dec)
 - 3.2% vs 3.2% f'cast, 3.4% prev
- U Mich conditions (Dec)
 - 59.4 vs 59.7 f'cast, 59.1 prev

Market Movement Recap

- 10:12 AM Sideways at modestly weaker levels. MBS down 2 ticks (.06) and 10yr up 2.1bps at 4.143
- 12:15 PM Decent recovery into 11am, but fading a bit now. MBS down 3 ticks (.09) and 01yr up 2.7bps at 4.148

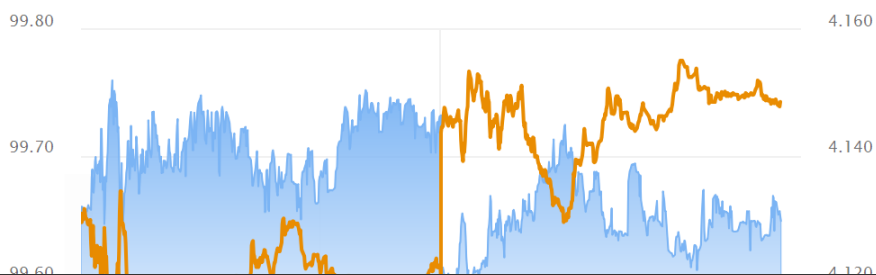
Lock / Float Considerations

- We're now entering peak holiday mode for bond markets. This means a wider range of movement that can happen for no apparent reason even though the average year sees rates drift aimlessly sideways in the 2nd half of December. The next risk for consequential volatility from scheduled events won't be until the first week of January.

Technicals/Trends in 10yr (why 10yr)

- Ceiling/Support (can be used as "lock triggers")
 - 4.48
 - 4.40
 - 4.34
 - 4.28
 - 4.19
 - 4.12
 - 4.05
- Floor/Resistance
 - 3.89
 - 3.97

MBS & Treasury Markets





MBS

30YR UMBS 5.0

30YR UMBS 5.5

30YR GNMA 5.0

15YR UMBS-15 5.0

US Treasuries

10 YR	4.149%	+0.027%
2 YR	3.486%	+0.022%
30 YR	4.826%	+0.022%
5 YR	3.694%	+0.031%

[Open Dashboard](#)

[Share This](#)