

MBS & TREASURY MARKETS

Daily Coverage. Industry Leading Perspective.

MBS Recap: Bond Market in Holiday Mode

Justin Grable

President of Mortgage Lending, ABLE Mortgage

www.ABEMortgage.com

P: (951) 899-0009

M: (951) 899-0010

justin@ablemortgage.com

41923 Second St.
Temecula CA 92592

NMLS 246763

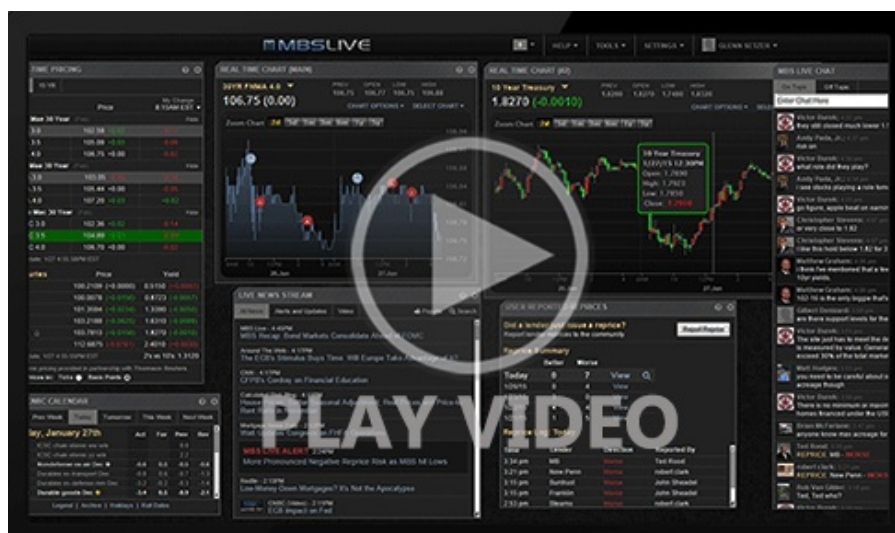
CADRE 01411989

ABLE
MORTGAGE

Bond Market in Holiday Mode

MBS Recap | Matthew Graham | 4:32 PM

Holiday mode is impossible to clearly define when it comes to its impact on the bond market. We know it when we see it, and we saw it today. Bonds paid no attention to econ data no matter how much it may seem that the 10am Consumer Sentiment numbers had an impact. Movement was minimal and not visibly tied to any other motivation. And as we already discussed this morning, Japan's rate hike was a non-event. Holiday trading randomness will get worse over the next 2 weeks before it improves in early January.



Watch the Video

MBS Morning

© MBS Live, LLC. All rights reserved. This newsletter is a service of MBS Live.

Econ Data / Events

- ○ Consumer Sentiment (Dec)
 - 52.9 vs 53.4 f'cast, 51.0 prev
- Existing home sales (Nov)
 - 4.13M vs 4.2M f'cast, 4.1M prev
- Sentiment: 1y Inflation (Dec)
 - 4.2% vs 4.1% f'cast, 4.5% prev
- Sentiment: 5y Inflation (Dec)
 - 3.2% vs 3.2% f'cast, 3.4% prev
- U Mich conditions (Dec)
 - 50.4 vs 50.7 f'cast, 51.1 prev

Market Movement Recap

- 10:12 AM Sideways at modestly weaker levels. MBS down 2 ticks (.06) and 10yr up 2.1bps at 4.143
- 12:15 PM Decent recovery into 11am, but fading a bit now. MBS down 3 ticks (.09) and 01yr up 2.7bps at 4.148

Lock / Float Considerations

- We're now entering peak holiday mode for bond markets. This means a wider range of movement that can happen for no apparent reason even though the average year sees rates drift aimlessly sideways in the 2nd half of December. The next risk for consequential volatility from scheduled events won't be until the first week of January.

Technicals/Trends in 10yr (why 10yr)

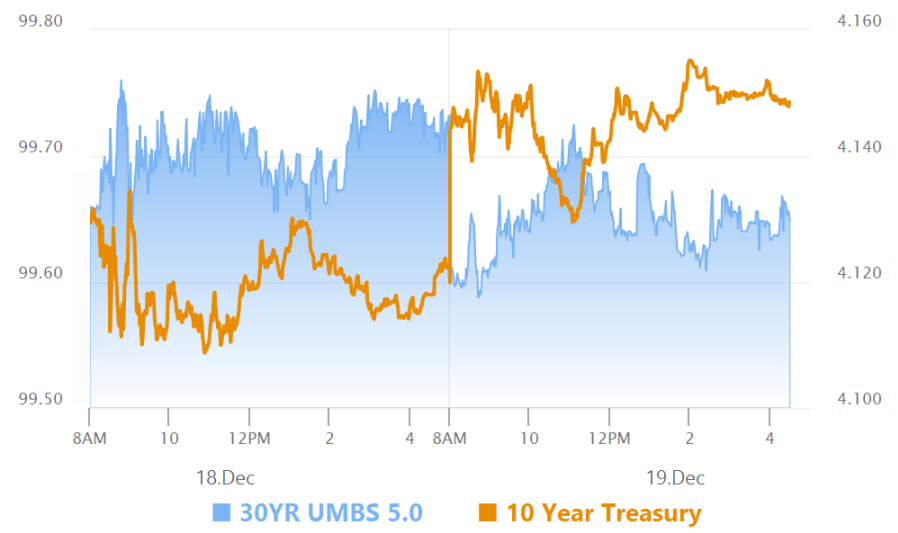
- Ceiling/Support (can be used as "lock triggers")
 - 4.48
 - 4.40

- 4.34
- 4.28
- 4.19
- 4.12
- 4.05

- Floor/Resistance

- 3.89
- 3.97

MBS & Treasury Markets



MBS

- 30YR UMBS 5.0
- 30YR UMBS 5.5
- 30YR GNMA 5.0
- 15YR UMBS-15 5.0

US Treasuries

| | | |
|-------|--------|---------|
| 10 YR | 4.149% | +0.027% |
| 2 YR | 3.486% | +0.022% |
| 30 YR | 4.826% | +0.022% |
| 5 YR | 3.694% | +0.031% |

Open Dashboard

Share This