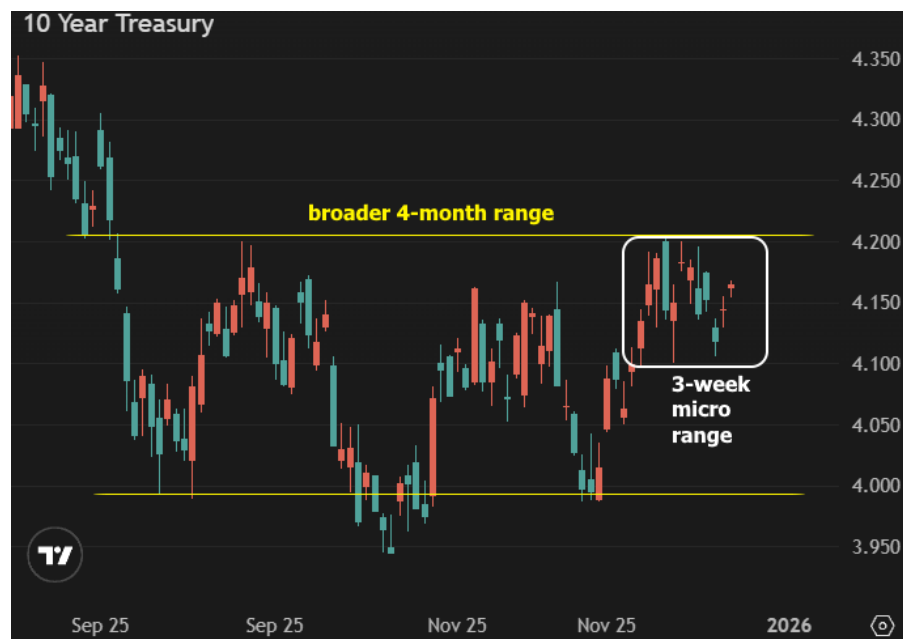


MBS & TREASURY MARKETS

Daily Coverage. Industry Leading Perspective.

The Day Ahead: Range-Bound Cruise Control

2025 is effectively over when it comes to meaningful shifts in the bond market. The coming days will be so heavily-affected by light volume/[liquidity](#) that any apparently significant shifts would be taken with a grain of salt anyway. Even as we look back over the past 4 months, we see a persistence of the very narrow 4.00-4.20 range in 10yr yields. The past 3 weeks have been especially narrow.



While the recent micro range in 10s is on the high side of the broader range, this has more to do with shifts in the yield curve. For instance, 2yr yields are hugging the lower end of their 4-month range.



Tan & Samantha Tunador

VP | Sr Loan Officer Team,
Atlantic Coast Mortgage, LLC

www.TheTunadorGroup.com

P: (703) 919-5875

M: (703) 328-0628

tan@acmllc.com

20365 Exchange Street
Ashburn Virginia 20147

NMLS ID 1166669

NMLS ID 2408374



MBS and mortgage rates are somewhere in between, which is why they've been outperforming 10yr yields relative to the highs/lows of their respective ranges.

