

# MBS & TREASURY MARKETS

Daily Coverage. Industry Leading Perspective.

## MBS Recap: Modest Recovery From Morning Weakness



**Chris Jones NMLS ID 130813**

Mortgage Loan Officer,  
NEXA Mortgage, LLC

[www.chrisjonesmortgagegroup.com](http://www.chrisjonesmortgagegroup.com)

**P:** (312) 505-9949

**M:** (312) 505-9949

[chrisjones@nexamortgage.com](mailto:chrisjones@nexamortgage.com)

3100 W Ray Road Suite 201  
Chandler AZ 85226

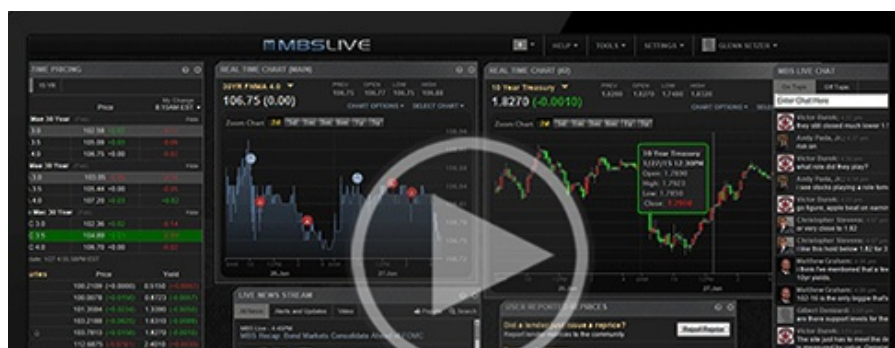
Corporate NMLS ID: 1660690



## Modest Recovery From Morning Weakness

MBS Recap | Matthew Graham | 3:22 PM

Bonds were slightly weaker this morning in a move that looked like it might have been significant when compared to yesterday's narrow range. But in a just-barely-wider context, today's volatility was just as inconsequential as almost any of the days in December so far. With that, we'll continue to count down to next week's bigger-ticket data and more robust trader participation.





Watch the Video

## MBS Morning

10:58 AM Meaningless Year-End Volatility

3:16 PM

## Econ Data / Events

- ○ Case Shiller Home Prices-20 y/y (Oct)
  - 1.3% vs 1.1% f'cast, 1.4% prev
- CaseShiller 20 mm nsa (Oct)
  - -0.3% vs -- f'cast, -0.5% prev
- FHFA Home Price Index m/m (Oct)
  - 0.4% vs 0.1% f'cast, 0% prev
- FHFA Home Prices y/y (Oct)
  - 1.7% vs -- f'cast, 1.7% prev
- Chicago PMI (Dec)
  - 43.5 vs 39.5 f'cast, 36.3 prev

## Market Movement Recap

- 10:10 AM Moderately weaker overnight and sideways so far. MBS down an eighth and 10yr up 2.7bps at 4.135
- 12:02 PM bouncing back a bit. MBS down only 1 tick (.03) and 10yr up 1.2bps at 4.119
- 03:14 PM Still mostly sideways. MBS down 2 ticks (.06) and 10yr up 2.1bps at 4.128.

## Lock / Float Considerations

- We're now entering peak holiday mode for bond markets. This means a wider range of movement that

are now entering peak holiday mode for bond markets. This means a wide range of movement that can happen for no apparent reason even though the average year sees rates drift aimlessly sideways in the 2nd half of December. The next risk for consequential volatility from scheduled events won't be until the first week of January.

Technicals/Trends in 10yr (why 10yr)

- Ceiling/Support (can be used as "lock triggers")
  - o 4.48
  - o 4.40
  - o 4.34
  - o 4.28
  - o 4.19
  - o 4.12
  - o 4.05
- Floor/Resistance
  - o 3.89
  - o 3.97

MBS & Treasury Markets



MBS

30YR UMBS 5.0	
30YR UMBS 5.5	
30YR GNMA 5.0	
15YR UMBS-15 5.0	+

US Treasuries

10 YR	4.129%	+0.022%
2 YR	3.452%	+0.022%

30 YR

4.814%

+0.018%

5 YR

3.681%

+0.039%

---

Open Dashboard

Share This