

MBS & TREASURY MARKETS

Daily Coverage. Industry Leading Perspective.

A message from Marc Erickson:

For informational purposes only. This is not a commitment to lend or extend credit. Information and/or dates are subject to change without notice. All loans are subject to credit approval. Rates vary based upon market conditions and borrower qualification.

MBS Recap: Modest Recovery From Morning Weakness



Marc Erickson

Mortgage Guide, Excel
Financial Group, LLC

www.themortgagemarc.com

P: (720) 295-0704

M: (720) 295-0704

123 N College Avenue
Fort Collins CO 80524
1245157



Ehric Wolfe

REALTOR®, Coldwell
Banker Realty

www.coloradowolfehomes.com

P: (970) 691-5299

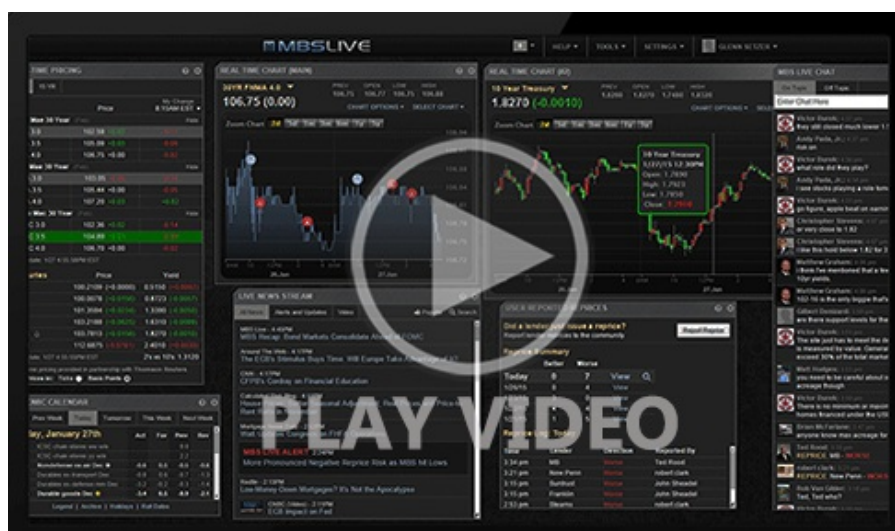
ehric@coloradowolfehomes.com

3665 John F Kennedy Parkway
Fort Collins CO 80525



Modest Recovery From Morning Weakness

Bonds were slightly weaker this morning in a move that looked like it might have been significant when compared to yesterday's narrow range. But in a just-barely-wider context, today's volatility was just as inconsequential as almost any of the days in December so far. With that, we'll continue to count down to next week's bigger-ticket data and more robust trader participation.



[Watch the Video](#)

MBS Morning

10:58 AM Meaningless Year-End Volatility

3:16 PM

Econ Data / Events

- ○ Case Shiller Home Prices-20 y/y (Oct)
 - 1.3% vs 1.1% f'cast, 1.4% prev
- CaseShiller 20 mm nsa (Oct)
 - -0.3% vs -- f'cast, -0.5% prev
- FHFA Home Price Index m/m (Oct)
 - 0.4% vs 0.1% f'cast, 0% prev
- FHFA Home Prices y/y (Oct)
 - 1.7% vs -- f'cast, 1.7% prev
- Chicago PMI (Dec)
 - 43.5 vs 39.5 f'cast, 36.3 prev

Market Movement Recap

- 10:10 AM Moderately weaker overnight and sideways so far. MBS down an eighth and 10yr up 2.7bps at 4.135
- 12:02 PM bouncing back a bit. MBS down only 1 tick (.03) and 10yr up 1.2bps at 4.119
- 03:14 PM Still mostly sideways. MBS down 2 ticks (.06) and 10yr up 2.1bps at 4.128.

Lock / Float Considerations

- We're now entering peak holiday mode for bond markets. This means a wider range of movement that can happen for no apparent reason even though the average year sees rates drift aimlessly sideways in the 2nd half of December. The next risk for consequential volatility from scheduled events won't be until the first week of January.

Technicals/Trends in 10yr (why 10yr)

- Ceiling/Support (can be used as "lock triggers")
 - o 4.48
 - o 4.40
 - o 4.34
 - o 4.28
 - o 4.19
 - o 4.12
 - o 4.05
- Floor/Resistance
 - o 3.89
 - o 3.97

MBS & Treasury Markets





MBS

30YR UMBS 5.0

30YR UMBS 5.5

30YR GNMA 5.0

15YR UMBS-15 5.0

+

US Treasuries

10 YR	4.129%	+0.022%
2 YR	3.452%	+0.022%
30 YR	4.814%	+0.018%
5 YR	3.681%	+0.039%

Open Dashboard

Share This