

MBS & TREASURY MARKETS

Daily Coverage. Industry Leading Perspective.

MBS Recap: Ultimately Underwhelming Despite Seemingly Significant Data



Marc Erickson

Mortgage Guide, Excel
Financial Group, LLC

www.themortgagemarc.com

P: (720) 295-0704

M: (720) 295-0704

123 N College Avenue
Fort Collins CO 80524
1245157



Ehric Wolfe

REALTOR®, Coldwell
Banker Realty

www.coloradowolfehomes.com

P: (970) 691-5299

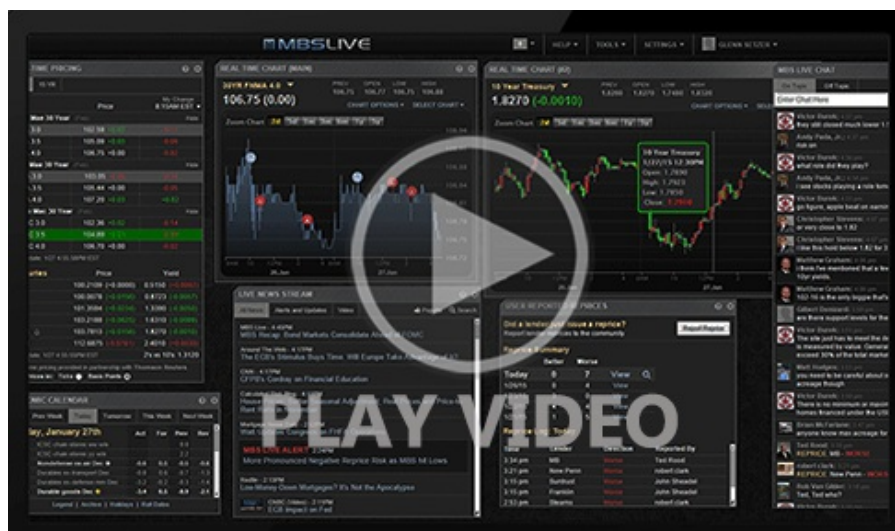
ehric@coloradowolfehomes.com

3665 John F Kennedy Parkway
Fort Collins CO 80525



Ultimately Underwhelming Despite Seemingly Significant Data

There was certainly the potential for volatility today with the confluence of ADP, ISM, and Job Openings data. But the results ended up being close enough to consensus to obviate any massive reactions. Yields hit their lowest levels in a week after ADP came in slightly softer, but most of the rally was already in place from the overnight session. Stronger ISM and job openings pushed bonds back in the other direction, but not enough to result in bond market losses or negative reprices.



Watch the Video

MBS Morning

8:45 AM Stronger Start Thanks to Europe and ADP

Alert

10:11 AM Down an Eighth From Highs After 10am Data

4:17 PM

Econ Data / Events

- ○ ADP Employment
 - 41k vs 47k f'cast, -32k prev
- ISM N-Mfg PMI (Dec)
 - 54.4 vs 52.3 f'cast, 52.6 prev
- ISM Services Employment (Dec)
 - 52.0 vs -- f'cast, 48.9 prev
- ISM Services New Orders (Dec)

- 57.9 vs -- f'cast, 52.9 prev
- ISM Services Prices (Dec)
 - 64.3 vs -- f'cast, 65.4 prev
- USA JOLTS Job Openings (Nov)
 - 7.146M vs 7.60M f'cast, 7.670M prev

Market Movement Recap

- 08:17 AM Steadily stronger overnight and slightly stronger after ADP. MBS up 5 ticks (.16) and 10yr down 4.2bps at 4.123
- 10:02 AM Losing ground after 10am data. MBS back to unchanged and 10yr down 1.3bps at 4.152
- 12:06 PM Recovering a bit into mid-day. MBS up 3 ticks (.09) and 10yr down 2.8bps at 4.138
- 04:42 PM Off the strongest levels, but still in stronger territory. MBS up 2 ticks (.06) and 10yr down 1.6bps at 4.149

Lock / Float Considerations

- With Wednesday's data failing to inspire any significant volatility, attention turns to Friday's jobs report as this week's last big-ticket event. Thursday is a bit of a push, but with rates at 2-month lows, risk averse clients remain in lock mode.

Technicals/Trends in 10yr (why 10yr)

- **Ceiling/Support** (can be used as "lock triggers")
 - 4.48
 - 4.40
 - 4.34
 - 4.28
 - 4.19
 - 4.12
 - 4.05
- **Floor/Resistance**
 - 3.89
 - 3.97



MBS

30YR UMBS 5.0	+
30YR UMBS 5.5	+
30YR GNMA 5.0	+
15YR UMBS-15 5.0	

US Treasuries

10 YR	4.151%	-0.015%
2 YR	3.472%	+0.006%
30 YR	4.832%	-0.035%
5 YR	3.705%	-0.006%

Open Dashboard

Share This