

# MBS & TREASURY MARKETS

Daily Coverage. Industry Leading Perspective.

## MBS Recap: Ultimately Underwhelming Despite Seemingly Significant Data



**Richard Ray**

Managing Partner, Caliver Beach Mortgage

Caliver Beach Mortgage

P: (240) 552-5369

M: (202) 390-4483

500 Redland Court Suite 300  
Owings Mill 21117

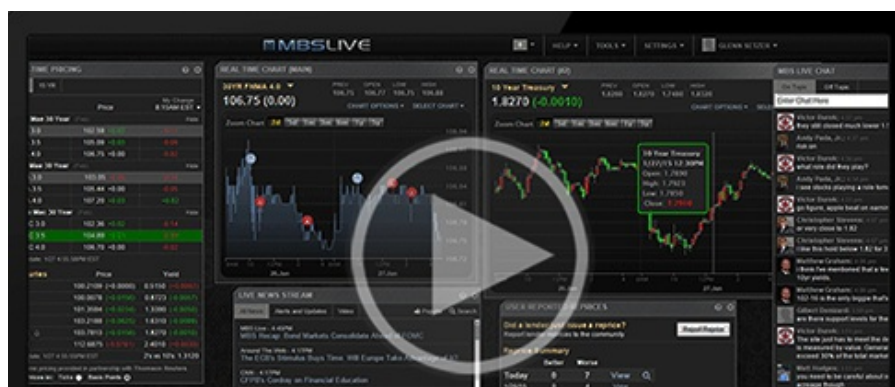
NMLS License Look Up  
Zillow Ratings



## Ultimately Underwhelming Despite Seemingly Significant Data

MBS Recap | Matthew Graham | 4:59 PM

There was certainly the potential for volatility today with the confluence of ADP, ISM, and Job Openings data. But the results ended up being close enough to consensus to obviate any massive reactions. Yields hit their lowest levels in a week after ADP came in slightly softer, but most of the rally was already in place from the overnight session. Stronger ISM and job openings pushed bonds back in the other direction, but not enough to result in bond market losses or negative reprices.





Watch the Video

## MBS Morning

8:45 AM Stronger Start Thanks to Europe and ADP

Alert

10:11 AM Down an Eighth From Highs After 10am Data

4:17 PM

## Econ Data / Events

- ○ ADP Employment
  - 41k vs 47k f'cast, -32k prev
- ISM N-Mfg PMI (Dec)
  - 54.4 vs 52.3 f'cast, 52.6 prev
- ISM Services Employment (Dec)
  - 52.0 vs -- f'cast, 48.9 prev
- ISM Services New Orders (Dec)
  - 57.9 vs -- f'cast, 52.9 prev
- ISM Services Prices (Dec)
  - 64.3 vs -- f'cast, 65.4 prev
- USA JOLTS Job Openings (Nov)
  - 7.146M vs 7.60M f'cast, 7.670M prev

## Market Movement Recap

- 08:17 AM Steadily stronger overnight and slightly stronger after ADP. MBS up 5 ticks (.16) and 10yr down 4.2bps at 4.123
- 10:02 AM Losing ground after 10am data. MBS back to unchanged and 10yr down 1.3bps at 4.152
- 12:06 PM Recovering a bit into mid-day. MBS up 3 ticks (.09) and 10yr down 2.8bps at 4.138
- 04:42 PM Off the strongest levels, but still in stronger territory. MBS up 2 ticks (.06) and 10yr down 1.6bps

on the strong recovery, but still in strong territory. MBS up 2 ticks (99) and 10y down 10bps at 4.149

## Lock / Float Considerations

- With Wednesday's data failing to inspire any significant volatility, attention turns to Friday's jobs report as this week's last big-ticket event. Thursday is a bit of a push, but with rates at 2-month lows, risk averse clients remain in lock mode.

## Technicals/Trends in 10yr (why 10yr)

- **Ceiling/Support** (can be used as "lock triggers")
  - o 4.48
  - o 4.40
  - o 4.34
  - o 4.28
  - o 4.19
  - o 4.12
  - o 4.05
- **Floor/Resistance**
  - o 3.89
  - o 3.97

## MBS & Treasury Markets



### MBS

30YR UMBS 5.0

+

30YR UMBS 5.5

+

US Treasuries		
10 YR	4.151%	-0.015%
2 YR	3.472%	+0.006%
30 YR	4.832%	-0.035%
5 YR	3.705%	-0.006%

Open Dashboard

Share This