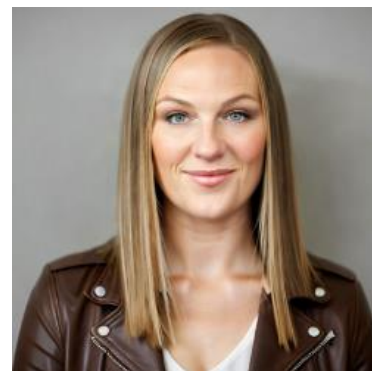


MBS & TREASURY MARKETS

Daily Coverage. Industry Leading Perspective.

The Day Ahead: Mixed, But Modestly Stronger Reaction to CPI

CPI came out just a bit lower than expected with the monthly core at 0.2 vs 0.3 and annual core at 2.6 vs 2.7. The unrounded numbers were closer to forecasts and headline inflation was unchanged from last month. All that to say that there was no major directional suggestion for rates in today's data. It's best use is to confirm that inflation is roughly where we left it before data collection got wonky surrounding the shutdown. Bonds are definitely stronger than they were before the data, but the gains have been choppy and fairly small so far.



Stacy Martinez

Mortgage Broker/Owner,
Mortgage Marketplace,
LLC

mortgagemarketplace.biz/.../stacy-martinez

P: (503) 560-3060

M: (503) 560-3060

3723 Fairview Industrial Dr SE
Salem OR 97302

2227274

