

MBS & TREASURY MARKETS

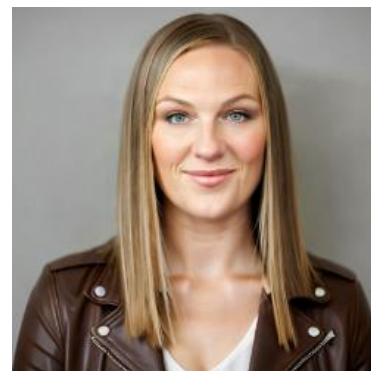
Daily Coverage. Industry Leading Perspective.

ALERT: MBS at Weakest Levels; Reprice Risk Varies

10yr yields have inched into negative territory, up half a bp at 4.183 but not any higher than they were at the day's previous highs.

MBS have sold more steadily and are now at the lows of the day. While prices are technically higher due to [monthly settlement](#), 5.0 coupons are down more than an eighth of a point from the AM highs.

That said, if your rate sheet is worse than yesterday's, reprice risk may be limited. If it's stronger than yesterday, reprices are possible.



Stacy Martinez

Mortgage Broker/Owner,
Mortgage Marketplace,
LLC

mortgagemarketplace.biz/.../stacy-martinez

P: (503) 560-3060

M: (503) 560-3060

3723 Fairview Industrial Dr SE
Salem OR 97302
2227274

