

MORTGAGE RATE WATCH

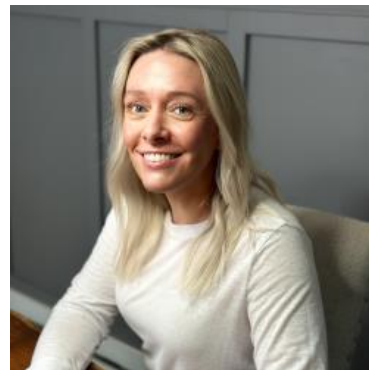
Daily Coverage. Industry Leading Perspective.

Mortgage Rates Match Lowest Levels in Over 2 Weeks

In the bigger picture, the past two and a half weeks have been marked by a very narrow range in the bond market. Because bonds dictate mortgage rates, the latter have also been in a narrow range with average top tier 30yr fixed rates of 6.15-6.20%.

Yesterday's employment-related data helped bonds improve. Many lenders made mid-day improvements to mortgage rates yesterday, but there was enough of a tailwind that the average lender was lower again this morning--now in line with the lower boundary of the recent range.

Next Wednesday's labor market data is a higher stakes event--one that could either bring rates back to the multi-year lows seen in January or push them up to the highest levels since December.



Shannon McAlister

Luminate Home Loans

<https://home-owners-pdx.com/>

M: (503) 516-8881

shannon.mcalister@goluminate.com

NMLS885982

Member
FDIC

