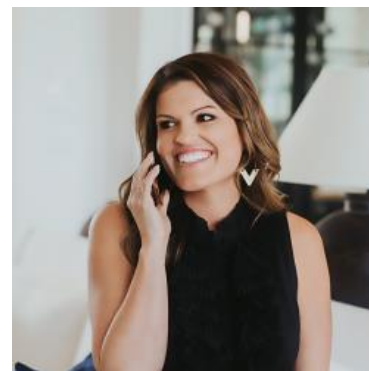


MBS & TREASURY MARKETS

Daily Coverage. Industry Leading Perspective.

ALERT: Weakest Levels of The Morning

MBS are now down 3/8ths on the day and more than a quarter point from the AM highs. Lenders who are already out with rates will likely have already accounted for most of the weakness. So there's limited--if any--negative reprice risk for today's rate sheets so far. But if you have access to lock yesterday's rates before today's come out, it's something to consider.



Ashlynn Kelso

Senior Loan Officer, RWM
Home Loans

www.ashlynnkelsoteam.com

M: (737) 444-1002

ashlynnkelso@gmail.com

700 S Austin Ave Suite 202
Georgetown Texas 78626
1074888

