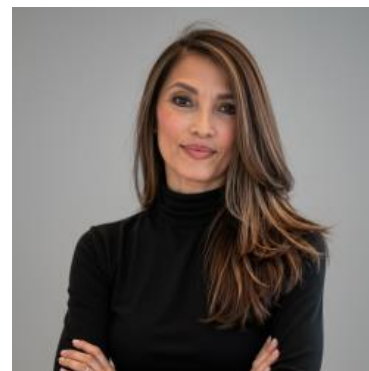


MBS & TREASURY MARKETS

Daily Coverage. Industry Leading Perspective.

ALERT: Down More Than an Eighth From Highs

MBS have drifted lower by just over an eighth of a point from the AM highs. Because those highs coincided with some lenders' rate sheet print times, negative repricing risk cannot be ruled out even though it's not a particularly high risk for the average lender. In order for that to change, we'd need to see a few more ticks of weakness.



CAROL SATIZABAL

Sales Manager, Contour
Mortgage

contourmortgage.com/carol-satizabal

P: (516) 415-8199

M: (516) 415-8199

990 Stewart Ave
Garden City New York 11530
818738