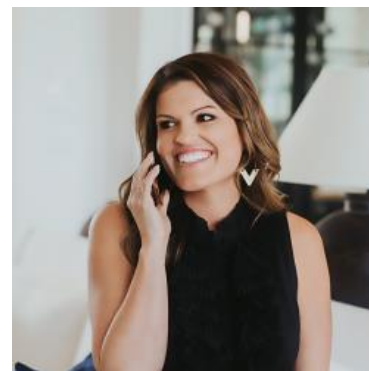


MBS & TREASURY MARKETS

Daily Coverage. Industry Leading Perspective.

ALERT: Down More Than an Eighth From Highs

MBS have drifted lower by just over an eighth of a point from the AM highs. Because those highs coincided with some lenders' rate sheet print times, negative repricing risk cannot be ruled out even though it's not a particularly high risk for the average lender. In order for that to change, we'd need to see a few more ticks of weakness.



Ashlynn Kelso

Senior Loan Officer, RWM
Home Loans

www.ashlynnkelsoteam.com

M: (737) 444-1002

ashlynnkelso@gmail.com

700 S Austin Ave Suite 202
Georgetown Texas 78626
1074888

