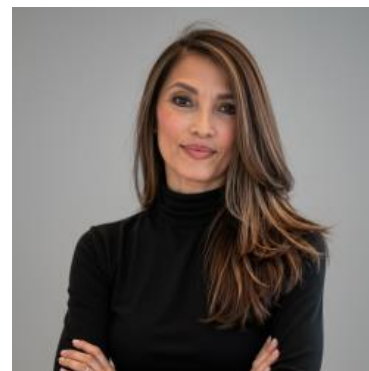


MBS & TREASURY MARKETS

Daily Coverage. Industry Leading Perspective.

ALERT: Down an Eighth From Highs

Just a heads up, mainly for lenders who've already repriced for the better: MBS are still up almost half a point on the day, but they've fallen just over an eighth of a point from intraday highs. The jumpiest lenders could technically justify a small negative reprice IF they repriced for the better during the AM highs (11:15-1:15 ET).



CAROL SATIZABAL

Sales Manager, Contour Mortgage

contourmortgage.com/carol-satizabal

P: (516) 415-8199

M: (516) 415-8199

990 Stewart Ave
Garden City New York 11530
818738