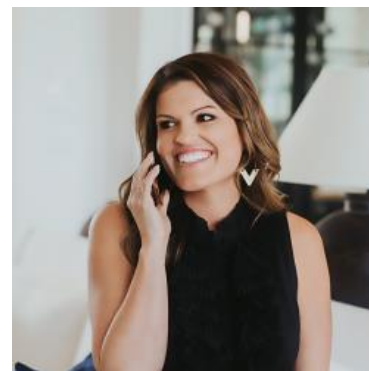


MBS & TREASURY MARKETS

Daily Coverage. Industry Leading Perspective.

ALERT: MBS Down an Eighth From Highs

MBS are now down just over an eighth of a point from the mid-day highs. Lenders who repriced for the better near the time of those highs could technically justify a negative reprice, but risk is reasonably low unless we lose a bit more ground.



Ashlynn Kelso

Senior Loan Officer, RWM
Home Loans

www.ashlynnkelsoteam.com

M: (737) 444-1002

ashlynnkelso@gmail.com

700 S Austin Ave Suite 202
Georgetown Texas 78626
1074888

