

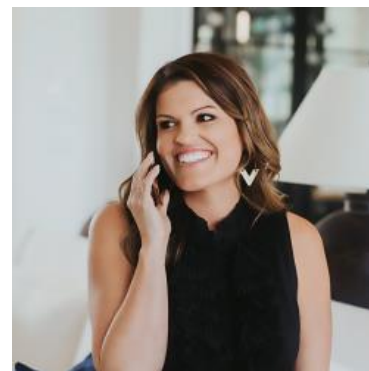
MBS & TREASURY MARKETS

Daily Coverage. Industry Leading Perspective.

ALERT: Some Selling at NYSE Open

The 9:30am NYSE open occasionally results in a pop of volume and volatility in the bond market and today is one of those occasions.

10yr yields are quickly up 2 bps to 4.359 and MBS are down a quick eighth of a point vs 9:30am levels. Jumpy lenders who were already out with rates could technically justify a negative reprice, but most lenders have yet to price.



Ashlynn Kelso

Senior Loan Officer, RWM
Home Loans

www.ashlynnkelsoteam.com

M: (737) 444-1002

ashlynnkelso@gmail.com

700 S Austin Ave Suite 202
Georgetown Texas 78626
1074888

