

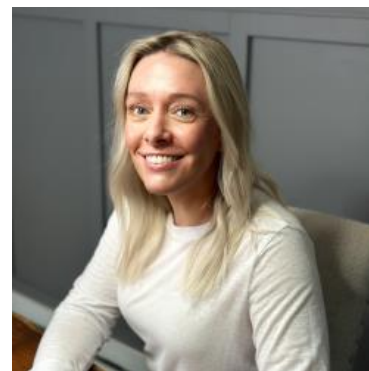
MBS & TREASURY MARKETS

Daily Coverage. Industry Leading Perspective.

ALERT: Some Selling at NYSE Open

The 9:30am NYSE open occasionally results in a pop of volume and volatility in the bond market and today is one of those occasions.

10yr yields are quickly up 2 bps to 4.359 and MBS are down a quick eighth of a point vs 9:30am levels. Jumpy lenders who were already out with rates could technically justify a negative reprice, but most lenders have yet to price.



Shannon McAlister

Luminate Home Loans

<https://home-owners-pdx.com/>

M: (503) 516-8881

shannon.mcalister@goluminate.com

NMLS885982

Member
FDIC

